



Mayor Patrick Foss
Vice Mayor Craig Lawrey
Council Member Tim Ellingson
Council Member Larry Karjala
Council Member Roger Henstorf

City of Menahga
Special City Council Meeting
2 pm, Thursday, October 18, 2018
City Council Chambers
115 2nd Street NE
www.cityofmenahga.com

The Menahga City Council will hold a special meeting on Tuesday, October 18, at 2 pm.

The City Council, acting as Board of Appeals and Adjustments will hear the objection from American Tower Corp. regarding the approval of a Conditional Use Permit granted to Uniti Towers.

The second purpose of the meeting is to discuss the 2019 City of Menahga Budget.



RINKE NOONAN
attorneys at law

October 5, 2018

Direct Dial: 320-257-3868
Aripple@RinkeNoonan.com

City of Menahga Board of Adjustment
c/o City Administrator
115 Second Street NE
P.O. Box C
Menahga, MN 56464

SENT VIA EMAIL TO: cmenahga@wcta.net

**Re: CONDITIONAL USE PERMIT APPEAL
Our File No. 28209-0003**

Dear Menahga Board of Adjustment:

Our office represents American Towers LLC. Pursuant to a telephone conference with City Administrator Ellingson on October 4, 2018, it is my understanding that the City believes an appeal to the City Council, sitting as the Board of Adjustment, must be made in order to exhaust all administrative remedies before seeking judicial review. This letter serves as that appeal on behalf of American Towers LLC with respect to the conditional use permit issued to Uniti Towers ("Uniti") on September 10, 2018. This letter supplements the two letters dated September 5, 2018 and September 10, 2018, which were previously submitted to the City by our office.

CELL TOWERS ARE NOT PUBLIC UTILITIES

The Menahga City Code does not define "public utility," "public service uses," or "public building," the terms used in Section 151.50(A)(2). Cell towers are not public utilities according to the Menahga City Code or on any other basis, and any inference that they are is erroneous. Scott Buell, the representative for Uniti stated on the record at the September 6, 2018 Planning Commission meeting the proposed cell tower was not a public utility. This makes sense because cell service is not monopolistic like other utilities—people have choices. Further, unlike telephone, gas, electric, or cable service public utilities, the City does not have a franchise agreement with the applicant. The City's subdivision code, Chapter 150, implies that public utilities are those services that are linear in nature—underground gas, sewer, and waterlines or overhead electric and telecommunication lines. State law does not consider cell towers a "public utility" for purposes of being able to be located in public right of way. (See Minn. Stat. §§ 161.45 and 237.163.) Construction in Menahga's residential agricultural district of an

Suite 300 US Bank Plaza
1015 W. St. Germain St.
P.O. Box 1497
St. Cloud, MN 56302
320.251.6700

[3161729] Letter Menahga Board of Adjustment (CUP Appeal) 10-5-18.docx
10/5/2018 10:35 AM

www.rinke Noonan.com

unnecessary cell tower that duplicates existing services is contrary to the spirit and the letter of the City Code because it works against the purpose of the zoning code, does not meet any of the criteria for issuance of a CUP, and is detrimental to the public welfare. The City's passage and approval of Resolution No. 2018-16 was unreasonable, arbitrary, and capricious because it was not based on a legally sufficient reason and was not supported by an adequate factual basis.

THE MENAHGA CITY CODE DOES NOT CONTEMPLATE CELL TOWERS

The Menahga City Code does not contemplate cell towers. The Menahga City Code fails to establish performance standards for the construction of cell towers such as co-location requirements, height restrictions, or mandatory setbacks, exposing neighboring property owners and other residents to potential harm in the form of visual pollution, nuisance shadows, unnecessary construction projects, residue from unnecessarily retired or duplicated towers. To the extent a city's land-use ordinances are vague, Minnesota law mandates that they should be construed against the city. The City Code is so vague regarding cell towers that it renders any decision on a CUP application for the construction of a new cell tower unreasonable, arbitrary, and capricious. American Towers is aggrieved by the City's failure to define public utility in its ordinances or to contemplate regulation of new cell tower construction.

NO NECESSITY

Even if cell towers could be construed as public utilities, there is no necessity for the Uniti tower as required by Menahga code Section 151.50(2). Both of American Towers' existing towers are less than ½ mile from the site proposed by Uniti. Further, American Towers' existing towers are closer to the City, provide better coverage and have capacity for co-location at the same RAD height being proposed by Uniti. This is explained in detail in our submission to the Planning Commission on September 5, 2018. Uniti has not submitted any information to demonstrate that the new tower is needed or necessary. There is no evidence in the record and no finding that suggests a new tower will provide better coverage or will it reduce rates for cell phone users in Menahga. The proposed new tower is entirely unnecessary and does nothing to advance public health, safety, convenience or welfare.

For these reasons, the Uniti CUP was improperly granted. American Towers appeals the granting of the Uniti CUP. The Uniti CUP should be rescinded.

Sincerely,


Adam A. Ripple
AAR/mjr

cc: American Towers LLC (via email)

[28209-0003/3161729/1]



31 August 2018

RE: Tower Development Project — Menagha, MN

To Whom It May Concern:

My name is Micah Hawthorne and I am a Principal Sales Engineer at American Tower with an RF Engineering background designing service area coverage for wireless carrier networks. My resume has been provided in support of this statement.

American Tower Corporation has an existing tower structure (Site #273422) on 350th St, Menagha, MN. Today, the ATC tower has AT&T installed at Antenna Center Line (ACL) 296ft.

Uniti Tower has a 300ft. tower proposed with AT&T as the anchor tenant at ACL 296ft. This location is approximately 0.4mi (2,080ft.) from AT&T existing installation on ATC's 273422 tower.

With 0.4mi proximity between the two tower locations (Exhibit 1), similar equipment configuration, and similar antenna center line installation heights (existing 296ft. versus proposed 296ft.), the attached plots suggest the 700MHz LTE coverage produced by the new tower location (Exhibit 2) would be substantially similar to the 700 MHz LTE coverage (Exhibit 3) opportunity from their current installation.

In addition, ATC has an additional tower (Site #416466) which is approximately 0.3mi from AT&T's proposed tower. This tower also has space available at 296ft, matching the application. This coverage is shown in Exhibit 4.

Micah T Hawthorne,

A handwritten signature in black ink that reads "Micah T Hawthorne".

Principal Sales Engineer



RINKE NOONAN
attorneys at law

Direct Dial: 320-257-3868
Aripple@RinkeNoonan.com

City of Menahga Planning Commission
c/o Janette Bower, City Administrator
115 Second Street NE
P.O. Box C
Menahga, MN 56464

HAND DELIVERED AND SENT VIA EMAIL TO: cmenahga@wcta.net

**Re: CUP Objection Letter
Our File No. 28209-0001**

Dear Menahga Planning Commission and Ms. Bower:

Our office represents American Towers LLC and submits this letter and associated documents related to the conditional use permit request for a cell tower from Uniti Towers. **American Towers LLC objects to the granting of the requested conditional use permit because it is unnecessary and will be detrimental to the community.** Please enter this letter and enclosures into the record for conditional use permit.

American Towers currently has two cell towers in very close proximity to the site proposed by Uniti. American Towers is a global wireless tower company that values its assets and the communities it operates in; operating in a safe and compliant manner with respect for natural resources is a stated top priority. American Towers does not object to Uniti's request because it is a competitor, rather it objects based on Uniti's unscrupulous practice of taking advantage of jurisdictions such as Menahga, that do not have robust zoning regulations in place in order to unfairly compete. Uniti's tactic is to site new towers right next to existing towers, which leaves local residents to suffer with an unnecessarily high density of cell towers. Tillman Infrastructure is another company that uses the same scheme to overburden communities with cell towers. Menahga is the latest jurisdiction Uniti has singled out because the City's ordinances contain some regulatory gaps; tomorrow Menahga could find itself dealing with an application from Tillman Infrastructure try to take advantage of those gaps too. Pictures from similar situations in other jurisdictions are enclosed.

PERFORMANCE STANDARDS

The Menahga zoning code contains no definitions for "tower" or "public utility," and there are no specific performance standards, such as height limitations or setbacks, that apply to towers or

Suite 300 US Bank Plaza
1015 W. St. Germain St.
P.O. Box 1497
St. Cloud, MN 56302
320.251.6700

www.rinkenoonan.com

Letter Menahga Planning Commission (objection letter) 9-5-18.docx
9/4/2018 11:54 AM

City of Menahga Planning Commission

public utilities. Within the Ag zoning district, the only performance standards relate to lot width and depth. Generally, cities throughout Minnesota distinguish cell towers from public utilities such as municipal services, cable, or gas and electric because the towers are typically owned by private business and leased to the carrier.

Further, nearly all cities in Minnesota impose significant performance standards on cell towers. Height limitations are required to prevent nuisance shadows on neighboring property and to protect the aesthetics of the community; height restrictions often vary among the various zoning districts in consideration of the various uses that might be allowed in each district. Setbacks from property lines are imposed for safety in the event of a failure and to protect public right of way. A common lot line setback requirement is 1.5 times the height of the tower. The guy line anchor points should also have appropriate setbacks. Cities also regulate interference with public safety communications, lighting, signage, accessory buildings associated with towers, and abandoned or unused towers. In applying these standards, cities typically require applicants to submit a site plan and have a professional engineer submit design information that identifies all potential antenna mounting locations, tower capacity, documentation showing that tower will not interfere with public safety communications, proof of FAA compliance, and compliance with state and federal structural and electrical standards.

The Menahga zoning code does not establish any meaningful performance standards for towers and exposes neighboring property owners and the City to potential harm.

CO-LOCATION

Most cities wish to encourage the thoughtful placement of as few cell towers as necessary to serve the area. This has resulted in many communities establishing co-location requirements, which is a way to ensure that antenna space on existing towers is properly utilized. This often results in restrictions for new towers within a mile of an existing tower unless an applicant can show: (1) a lack of capacity on an existing tower, (2) interference with existing equipment of existing towers, or (3) some other situation that prevents co-location.

Both of American Towers' existing towers are less than ½ mile from the site proposed by Uniti. Further, American Towers' existing towers are closer to the City and provide better coverage and have capacity for co-location at the same RAD height being proposed by Uniti. Enclosed are two coverage maps that show the existing coverage in the area for AT&T, which currently has an antenna on the American Towers structure. These maps show that AT&T currently has strong voice and data coverage in the area, so a new tower is not necessary for coverage (<https://www.att.com/maps/wireless-coverage.html>). Also enclosed is a letter and additional information from Micah Hawthorne, an engineer for American Towers that substantiates this.

CUP STANDARD

It appears that Menahga treats cell towers as public utilities, but that is unclear by the text of the zoning code. The Agricultural zoning district does not explicitly provide for towers, or even public utilities, as permitted or conditional uses within the Ag zoning district. Section 151.50(A)(2) looks like it provides the only authority to allow public utilities – assuming cell

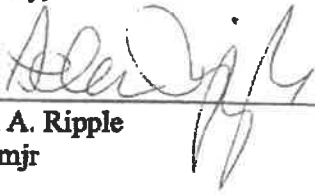
[28209-0001/3132367/1]

City of Menahga Planning Commission

towers fall within that term – in the Ag district by conditional use permit. That section only allows utilities “when found to be necessary for public health, safety, convenience or welfare.” Uniti’s requested tower is unnecessary and does not meet the standard for granting a CUP under Section 151.50(A)(2) of the zoning code.

Again, American Towers, LLC requests that the City of Menahga deny the Uniti conditional use permit because it is unnecessary and will be detrimental to the community.

Sincerely,



Adam A. Ripple
AAR/mjr

Enclosures

cc: American Towers LLC (via email)

[28209-0001/3132367/1]

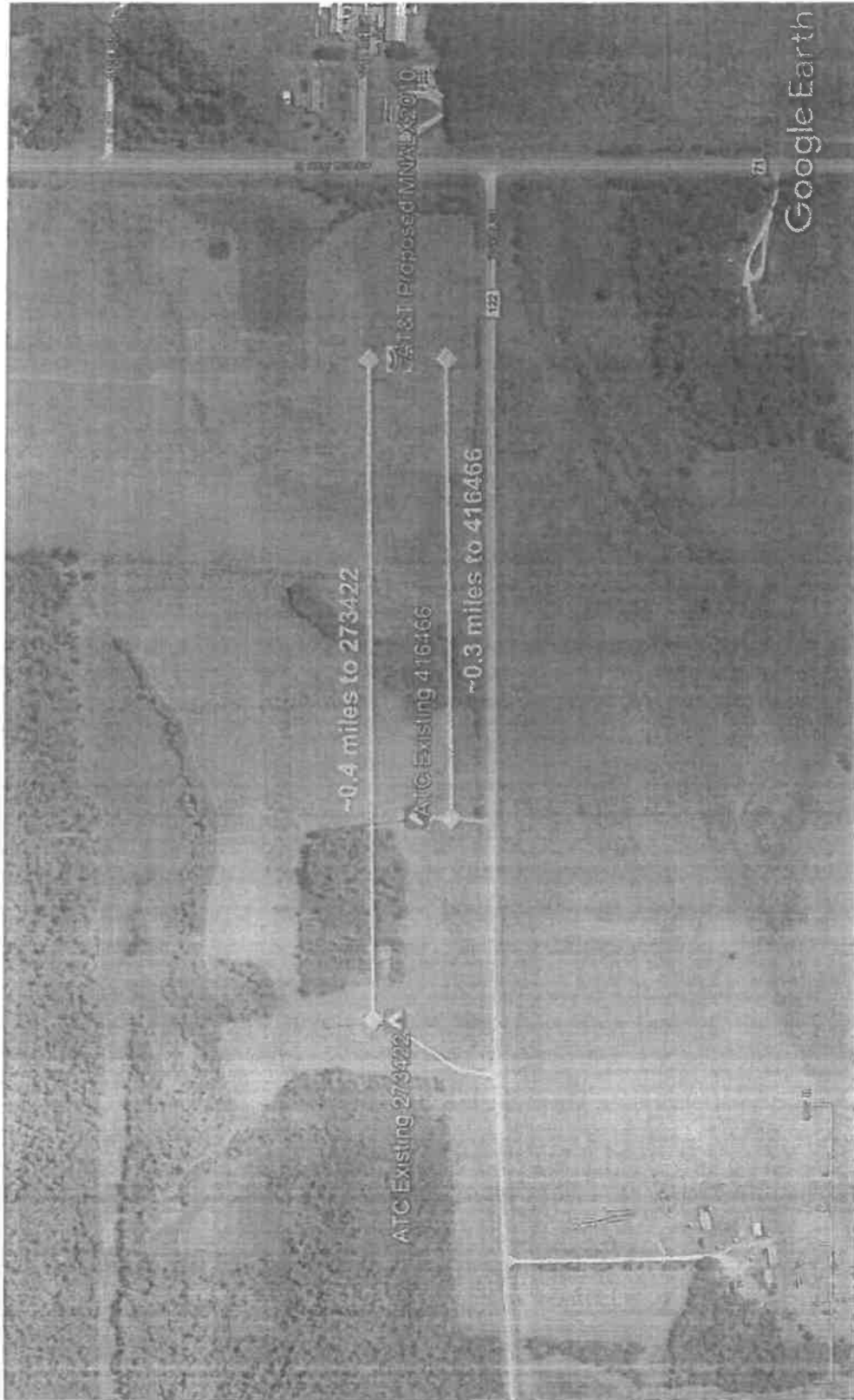


Exhibit 1: ATC towers approximately ~0.3mi (~1,600ft.) and ~0.4mi (~2,080ft.) from AT&T proposed tower on neighboring parcel.



September 10, 2018

Direct Dial: 320-257-3868
Aripple@RinkeNoonan.com

City of Menahga City Council
c/o City Administrator
115 Second Street NE
P.O. Box C
Menahga, MN 56464

HAND DELIVERED AND SENT VIA EMAIL TO: cmenahga@wcta.net

**Re: CUP Objection Letter
Our File No. 28209-0001**

Dear Menahga City Council and City Administrator:

Our office represents American Towers LLC and submits this letter and associated documents related to the conditional use permit request for a cell tower from Uniti Towers; a prior objection was also filed with the Planning Commission. **American Towers LLC objects to the granting of the requested conditional use permit because it is unnecessary and will be detrimental to the community.** Please enter this letter and enclosures, as well as the letter filed on September 5, 2018, into the record for conditional use permit. We will be in attendance at tonight's meeting. Also, please note that we will be exercising our right to tape record the meeting since the Planning Commission meeting went unrecorded. Further, we request a copy of the correspondence from the City Attorney discussed at the Planning Commission meeting as it was not included in the public copy of the meeting packet or in the City's response to our dated practice request on September 5, 2018. We also request copies of any additional information submitted to the City or considered by the City Council as a part of Uniti's CUP request; another completed "Information Disclosure Request" for is included.

CELL TOWER IS NOT A PUBLIC UTILITY

Cell towers are not listed as a conditional use in the Ag zoning district. It appears that the cell tower is being improperly allowed in the Ag district by conditional use permit because it is being incorrectly classified as a "public utility." The Menahga zoning code contains no definitions for "tower" or "public utility." However, as the applicant, Mr. Buell, stated at the public hearing, the tower is not a public utility. Unlike telephone, gas, electric, or cable service public utilities, the City does not have a franchise agreement with the applicant. The City subdivision code, Chapter 150, implies that public utilities are those services that are linear in nature—underground gas, sewer, and waterlines or overhead electric and telecommunication lines. State law does not

City of Menahga City Council
September 10, 2018
Page 2

consider cell towers a "public utility" for purposes of being able to be located in public right of way. (See Minn. Stat. §§ 161.45 and 237.163.) Enclosed is a copy of a memorandum prepared by the League of Minnesota Cities that provides some additional context and explains that while small cell wireless facilities may be public utilities, traditional cell towers are not. (See LMC memo pages 2-3.)

NO NECESSITY

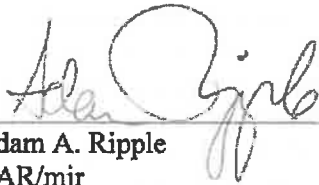
Both of American Towers' existing towers are less than ½ mile from the site proposed by Uniti. Further, American Towers' existing towers are closer to the City and provide better coverage and have capacity for co-location at the same RAD height being proposed by Uniti. This is explained in detail in our submission to the Planning Commission. Uniti has not submitted any information to demonstrate that the new tower is needed or necessary. A new tower will not provide better coverage nor will it reduce rates for cell phone users in Menahga. The proposed new tower is entirely unnecessary and does nothing to advance public health, safety, convenience or welfare.

CITY ORDINANCE IS INADEQUATE

Again, nearly all cities in Minnesota impose significant performance standards on cell towers. The Menahga zoning code does not establish any meaningful performance standards for towers and exposes neighboring property owners and the City to potential harm. Uniti and AT&T are taking advantage lack of proper regulations. We urge the City to deny, or at least table, the tower application until the City re-examines and reinforces its zoning regulations for cell towers.

Again, American Towers, LLC requests that the City of Menahga deny the Uniti conditional use permit because it is not a public utility, it is unnecessary and will be detrimental to the community.

Sincerely,



Adam A. Ripple
AAR/mjr

Enclosures

cc: American Towers LLC (via email)



INFORMATION MEMO

Cell Towers, Small Cell Technologies & Distributed Antenna Systems

Learn about large and small cell tower deployment and siting requests for small cell, small wireless and distributed antenna systems (DAS) technology. Better understand the trend of the addition of DAS, small wireless or small cell equipment on existing utility equipment. Be aware of common gaps in city zoning, impact of federal and state law, reasons for collocation agreements and some best practices for dealing with large and small cell towers, small wireless facilities and DAS.

RELEVANT LINKS:

47 U.S.C. § 253 (commonly known as Section 253 of Telecommunications Act).

47 U.S.C. § 332 (commonly known as Section 332 of Telecommunications Act).

FCC Website.



47 U.S.C. § 253 (commonly known as Section 253 of Telecommunications Act).

47 U.S.C. § 332 (commonly known as Section 332 of Telecommunications Act).

I. Deployment of large cell towers or antennas

A cell site or cell tower creates a “cell” in a cellular network and typically supports antennas plus other equipment, such as one or more sets of transceivers, digital signal processors, control electronics, GPS equipment, primary and backup electrical power and sheltering. Only a finite number of calls or data can go through these facilities at once and the working range of the cell site varies based on any number of factors, including height of the antenna. The Federal Communications Commission (FCC) has stated that cellular or personal communications services (PCS) towers typically range anywhere from 50 to 200 feet high.

The emergence of personal communications services, the increased number of cell providers, and the growing demand for better coverage have spurred requests for new cell towers, small cell equipment, and distributed antenna systems (DAS) nationwide. Thus, some cellular carriers, telecommunications wholesalers or tower companies, have attempted to quickly deploy telecommunications systems or personal wireless service facilities, and, in doing so, often claim federal law requires cities to allow construction or placement of towers, equipment, or antennas in rights of way. Such claims generally have no basis. Although not completely unfettered, cities can feel assured that, in general, federal law preserves local zoning and land use authority.

A. The Telecommunications Act and the FCC

The Telecommunications Act of 1996 (TCA) represented America’s first successful attempt to reform regulations on telecommunications in more than 60 years, and was the first piece of legislation to address internet access. Congress enacted the TCA to promote competition and higher quality in American telecommunications services and to encourage rapid deployment of new telecommunications technologies.

This material is provided as general information and is not a substitute for legal advice. Consult your attorney for advice concerning specific situations.

RELEVANT LINKS:

FCC website interpreting Telecommunications Act of 1996.

47 U.S.C. § 253 (Section 253 of Telecommunications Act).

47 U.S.C. § 332(c)(7).

FCC 09-99, Declaratory Ruling (Nov. 18, 2009).

47 U.S.C. § 253(c)(e) (Section 253 of Telecommunications Act).

47 U.S.C. § 332(c)(7).

FCC 09-99, Declaratory Ruling (Nov. 18, 2009).

Sprint Spectrum v. Mills, 283 F.3d 404 (2nd Cir. 2002).

USCOC of Greater Missouri v. Vill. Of Marlborough, 618 F.Supp.2d 1055 (E.D. Mo. 2009).

FCC 09-99, Declaratory Ruling (Nov. 18, 2009).

The FCC is the federal agency charged with creating rules and policies under the TCA and other telecommunications laws.

The FCC also manages and licenses commercial users (like cell providers and tower companies), as well as non-commercial users (like local governments). As a result, both the TCA and FCC rulings impact interactions between the cell industry and local government.

The significant changes in the wireless industry and its related shared wireless infrastructures, along with consumer demand for fast and reliable service on mobile devices, have fueled a frenzy of requests for large and small cell/DAS site development and/or deployment. As a part of this, cities find themselves facing cell industry arguments that federal law requires cities to approve tower siting requests.

Companies making these claims most often cite Section 253 or Section 332 of the TCA as support. Section 253 states “no state or local statute or regulation may prohibit or have the effect of prohibiting the ability of any entity to provide any interstate or intrastate telecommunications service.” Section 332 has a similar provision ensuring the entry of commercial mobile services into desired geographic markets to establish personal wireless service facilities.

These provisions should not, however, be read out of context. When reviewing the relevant sections in their entirety, it becomes clear that federal law does not pre-empt local municipal regulations and land use controls. Specifically, the law states “[n]othing in this section affects the authority of a state or local government to manage the public rights of way or to require fair and reasonable compensation from telecommunications providers, on a competitively neutral and nondiscriminatory basis, for use of public rights of way ...” and that “nothing in this chapter shall limit or affect the authority of ... local government ... over decisions regarding the placement, construction, and modification of personal wireless service facilities”.

Courts consistently have agreed that local governments retain their regulatory authority and, when faced with making decisions on placement of towers, antenna or *new* telecommunication service equipment on city facilities, they generally have the same rights that private individuals have to deny or permit placement of a cellular tower on their property. This means cities can regulate and permit placement of towers and other personal wireless service facilities, including, in most situations (though some state law restrictions exist regarding regulations of small wireless support structures), controlling height, exterior materials, accessory buildings, and even location. Cities should be careful to make sure that local regulations don't have the effect of completely banning all cell towers or personal wireless service facilities. Such regulation could run afoul of federal law (not to mention state law as well).

RELEVANT LINKS:

Vertical Broadcasting v. Town of Southampton, 84 F. Supp.2d 379 (E.D.N.Y. 2000).

Paging v. Bd. of Zoning Appeals for Montgomery City, 957 F.Supp. 805 (W.D. Va. 1997).

Letter from Minnesota Department of Commerce to Mobilitie.

Minn. Stat. § 237.162
Minn. Stat. § 237.163
Chapter 94, Art. 9, 2017
Regular Session.

Minnesota Public Utilities Commission, Meeting Agenda (Nov. 3, 2016).

Minn. Stat. § 237.162.
Minn. Stat. § 237.163
Chapter 94, Art. 9, 2017
Regular Session.

Some cellular companies try to gain unfettered access to city right of way by claiming they are utilities. The basis for such a claim usually follows one of two themes—either that, as a utility, federal law entitles them to entry; or, in the alternative, under the city’s ordinances, they get the same treatment as other utilities. Courts have rejected the first argument of entitlement, citing to the specific directive that local municipalities retain traditional zoning discretion.

B. State law

In the alternative, the argument that a city’s local ordinances include towers as a utility has, on occasion and in different states, carried more weight with a court. To counter such arguments, cities may consider specifically excluding towers, antenna, small cell, and DAS equipment from their ordinance’s definition of utilities. The Minnesota Department of Commerce, in a letter to a wireless infrastructure provider, cautioned one infrastructure company that its certificate of authority to provide a local niche service did not authorize it to claim an exemption from local zoning. The Minnesota Department of Commerce additionally requested that the offending company cease from making those assertions.

In Minnesota, to clear up confusion about whether wireless providers represent telecommunications right-of-way users under state law and to address concerns about deployment of small wireless technology, the Legislature amended Minnesota’s Right-of-Way User statutes, or Minnesota ROW Law, in the 2017 legislative session to specifically address small wireless facilities and the support structures on which those facilities may attach.

Because of these amendments, effective May 31, 2017 additional specific state statutory provisions apply when cities, through an ordinance, manage their rights of way, recover their right-of-way management costs (subject to certain restrictions), and charge rent for attaching to city-owned structures in public rights of way. Rent, however, is capped for collocation of small wireless facilities. State law defines “collocate” or “collocation” as a means to install, mount, maintain, modify, operate, or replace a small wireless facility on, under, within, or adjacent to an existing wireless support structure that is owned privately or by a local government unit.

The Minnesota ROW Law allows cities to require telecommunications right-of-way users to get a permit for use of the right of way; however, it creates a separate permitting structure for the siting of small wireless facilities.

RELEVANT LINKS:

USCOC of Greater Missouri v. Vill. Of Mariborough, 618 F.Supp.2d 1055 (E.D. Mo. 2009).

Minnesota Towers Inc. v. City of Duluth, 474 F.3d 1052 (8th Cir. 2007).

NE Colorado Cellular, Inc. v. City of North Platte, 764 F.3d 929 (8th Cir. 2014) (denial of CUP for tower must be "in writing" but need not be a separate finding from the reasons in the denial).

Smith Comm. V. Washington Cty, Ark., 785 F.3d 1253 (8th Cir. 2015) (substantial evidence' analysis involves whether the local zoning authority's decision is consistent with the applicable local zoning requirements and can include aesthetic reasons).

FCC 09-99, Declaratory Ruling, Nov. 18, 2009.

Tower and Antenna Siting FAQ sheet from FCC.

T-Mobile West V. Crow, No. CV08-1337 (D. AZ. Dec. 16, 2009).

Because of the recent significant changes in the state law and the specific requirements for deployment of small wireless facilities that do not apply to other telecommunications right-of-way users, cities should work with their city attorneys to review and update their ordinances.

C. Limitations on cities' authority

1. Federal law

Although federal law expressly preserves local governmental regulatory authority, it does place several substantive and procedural limits on that authority. Specifically, a city:

- Cannot unreasonably discriminate among providers of functionally equivalent services.
- Cannot regulate those providers in a manner that prohibits or has the effect of prohibiting the provision of telecommunications services or personal wireless services.
- Must act on applications within a reasonable time.
- Must document denial of an application in writing supported by "substantial evidence."

Proof that the local zoning authority's decision furthers the applicable local zoning requirements or ordinances satisfies the substantial evidence test. Municipalities cannot cite environmental concerns as a reason for denial, however, when the antennas comply with FCC rules on radio emissions. In the alternative, cities can request proof of compliance with the FCC rules.

Bringing an action in federal court represents the recourse available to the cellular industry if challenging the denial of a siting request under federal law. Based on the limitations set forth in the federal law on local land use and zoning authority, most often, when cities deny siting requests, the challenges to those denials claim one of the following:

- The municipal action has the effect of "prohibiting the provision of personal wireless service."
- The municipal action unreasonably discriminates among providers of functionally equivalent services (i.e., cell providers claiming to be a type of utility so they can get the same treatment as a utility under city ordinance).

RELEVANT LINKS:

Minn. Stat. § 237.162
Minn. Stat. § 237.163
Chapter 94, Art. 9, 2017
Regular Session.

See further discussion of
state law restrictions in
Section II-A, below

*Minnesota Towers Inc. v.
City of Duluth*, 474 F.3d
1052 (8th Cir. 2007). *Smith
Comm. V. Washington Cty.
Ark.*, 785 F.3d 1253 (8th Cir.
2015).

*Voicestream PCSII Corp. v.
City of St. Louis*, No.
4:04CV732 (E.D.Mo. August
3, 2005) (city interpretation
of city ordinance treats
communication facility as a
utility).

*USCOC of Greater Missouri
v. Vill. Of Marlborough*, 618
F.Supp2d 1055, 1064 (E.D.
Mo. 2009) (TCA explicitly
contemplates some
discrimination amount
providers of functionally
equivalent services).

2. State law

In addition to mirroring some of the federal law requirements, such as the requirement of equal treatment of all like providers, state law permits cities, by ordinance, to further regulate “telecommunications right-of-way users.”

Minnesota’s Telecom ROW Law expressly includes wireless service providers as telecommunications right-of-way users, making the law applicable to the siting of both large and small, wire-lined or wireless telecommunications equipment and facilities, in the rights of way.

State law places additional restrictions on the permitting and regulating of small wireless facilities and wireless support structure placement. Accordingly, cities should work with city attorneys when drafting, adopting, or amending their ordinance. The Telecom ROW Law still expressly protects local control, allowing cities to deny permits for reasonable public health, welfare, and safety reasons, with no definitions of or limitations on what qualifies as health, welfare, and safety reasons.

D. Court decisions

The 8th U.S. Circuit Court of Appeals (controlling law for Minnesota) recognizes that cities do indeed retain local authority over decisions regarding the placement and construction of towers and personal wireless service facilities.

The 8th Circuit also has heard cases where a carrier or other telecommunications company argued they are a utility and should be treated as such under local ordinances. Absent a local ordinance that includes this type of equipment within its definition of utilities, courts do not necessarily deem cell towers or other personal communications services equipment functionally equivalent to utilities.

Additionally, courts have found that the federal law anticipates some disparate application of the law, even among those deemed functionally equivalent. For example, courts determined it reasonable to consider the location of a cell tower when deciding whether to approve tower construction (finding it okay to treat different locations differently), so long as cities do not allow one company to build a tower at a specific location at the exclusion of other providers.

RELEVANT LINKS:

For regulation of telecommunications right-of-way users, see Appendix A, Sample Ordinances and Agreements.

Minn. Stat. 237.163, Subd. 2
(f). Chapter 94, Art. 9, 2017
Regular Session.



E. City approaches

Regulation of placement of cell towers and personal wireless services can occur through an ordinance. The Minnesota ROW Law provides cities with comprehensive authority to manage their rights of way. With the unique application of federal law to telecommunications and the recent changes to state law, along with siting requests for locations both in and out of rights of way, many cities find having a separate telecommunications right-of-way user ordinance (in addition to a right-of-way ordinance) allows cities to better regulate towers and other telecommunications equipment, as well as collocation of small wireless facilities and support structures.

Some cities also have modified the definitions in their ordinances to exclude cell towers, telecommunications, wireless systems, DAS, small cell equipment, and more from utilities to counter the cell industry's requests for equal treatment or more lenient zoning under the city's zoning ordinances.

In addition to adopting specific regulations, many city zoning ordinances recognize structures as conditional uses requiring a permit (or many of these regulations include a provision for variances, if needed). While cities may require special permits or variances to their zoning for siting of large cell facilities, under state law, small wireless facilities and wireless support structures accommodating those small wireless facilities are deemed a permitted use. The only exception to the presumed, permitted use for small wireless is that a city may require a special or conditional land use permit to install a new wireless support structure in a residentially zoned or historic district. Cities will want to review their zoning to make sure it complies with the Minnesota ROW Law.

II. Deployment of small cell technologies and DAS

Small cell equipment and DAS both transmit wireless signals to and from a defined area to a larger cell tower. They are often installed at sites that support cell coverage either within a large cell area that has high coverage needs or at sites within large geographic areas that have poor cell coverage overall.

RELEVANT LINKS:



Minn. Stat. § 237.162.
Minn. Stat. § 237.163.
Chapter 94, Art. 9, 2017
Regular Session.
See Appendix A, Sample
Ordinances and Agreements.

See League FAQ on
Minnesota 2017
Telecommunication Right of
Way User Amendments (July
2017).

See Appendix A, Sample
Ordinances and Agreements

Situational needs dictate when cell providers use small cell towers, as opposed to DAS technology. Generally, cell providers install small cell towers when they need to target specific indoor or outdoor areas like stadiums, hospitals, or shopping malls. DAS technology, alternatively, uses a small radio unit and an antenna (that directly link to an existing large cell tower via fiber optics). Installation of a DAS often involves cell providers using the fiber within existing utility structures to link to its larger cell tower. Cities sometimes are asked to provide the power needed for the radios, which the city can negotiate into the leasing agreement with the cell provider.

A. Additional zoning and permitting needs under state law

Historically, many cities' ordinances address large cell sites, but not small cell towers or DAS. With the recent changes to state law, cities should work with their city attorney to review their ordinances in consideration of the new statutory permit process for the siting of small wireless facilities.

Cities can charge rent (up to a cap for small wireless siting) under the statute for placement of cell technology or DAS on existing or newly installed support structures, like poles or water towers; and, also, can enter into a separate agreement to address issues not covered by state law or ordinance. Cities should work with their city attorney to get assistance with drafting these agreements and any additional documents, like a bill of sale (for transfer of pole from carrier to city), if necessary.

The terms and conditions of these agreements, called collocation agreements, for siting of small wireless facilities, most likely will mirror agreements formerly referred to as master licensing agreements, often including provisions such as:

- Definitions of scope of permitted uses.
- Establishment of right-of-way rental fee (note statutory limitations).
- Protection of city resources.
- Provision of contract term (note statutory limitations).
- Statement of general provisions.
- Maintenance and repair terms.
- Indemnity provisions.
- Insurance and casualty.
- Limitation of liability provision.
- Terms for removal.

RELEVANT LINKS:

Minn. Stat. § 237.162
Minn. Stat. § 237.163
Chapter 94, Art. 9, 2017
Regular Session.

See League FAQ on
Minnesota 2017
Telecommunication Right of
Way User Amendments (July
2017).

State law does not require a separate agreement, and some cities have chosen to put these provisions in their ordinance or permit instead. For cities that choose to have a separate agreement in place, they must develop and make that agreement publicly available no later than November 31, 2017 (six months after the effective date of this act) or three months after receiving a small wireless facility permit application from a wireless service provider. The agreement must be made available in a substantially complete form; however, the parties to the small wireless facility collocation agreement can incorporate additional mutually agreed upon terms and conditions. The law classifies any small wireless facility collocation agreement between a local government unit and a wireless service provider as public data, not on individuals, making those agreements accessible to the public under Minnesota's Data Practices Law.

Additionally, the new amendments to Minnesota's Telecom ROW Law set forth other requirements that apply only to small cell wireless facility deployment. The 2017 amendments changed Minnesota's ROW Law significantly, the details, of which, can be found in the League's FAQ on *Minnesota 2017 Telecommunication Right of Way User Amendments* (July 2017). However, after the amendments, the law now generally provides:

- A presumption of permitted use in all zoning districts, except in districts zoned residential or historical districts.
- The requirement that cities issue or deny small wireless facility requests within 90 days, with a tolling period allowed upon written notice to the applicant, within 30 days of receipt of the application.
- An allowance to batch applications (simultaneously submit a group of applications), with the limitation to not exceed 15 small wireless requests for substantially similar equipment on similar types of wireless support structures within a two-mile radius.
- Rent not to exceed \$150 per year with option of an additional \$25 for maintenance and allowances for electricity, if cities do not require separate metering.
- The limitation that cities cannot ask for information already provided by the same applicant in another small cell wireless facility application, as identified by the applicant, by reference number to those other applications.
- A restriction that the height of wireless support structures cannot exceed 50 feet, unless the city agrees otherwise.
- A restriction that wireless facilities constructed in the right of way may not extend more than 10 feet above an existing wireless support structure in place.

RELEVANT LINKS:

47 U.S.C. § 332 (commonly known as Section 332 of Telecommunications Act).

FCC 09-99, Declaratory Ruling (Nov. 18, 2009).

FCC 14-153, Report & Order (October 21, 2014).

Minn. Stat. § 237.163, Subd. 3a(f).
Chapter 94, Art. 9, 2017 Regular Session.

See Appendix A, Sample Ordinances and Agreements.

- A prohibition on moratoriums with respect to filing, receiving, or processing applications for right-of-way or small wireless facility permits; or issuing or approving right-of-way or small wireless facility permits. For cities that did not have a right-of-way ordinance in place on or before May 18, 2017, the prohibition on moratoria does not take effect until January 1, 2018, giving those cities an opportunity to enact an ordinance regulating its public rights-of-way.

NOTE: These additional state law requirements do NOT apply to collocation on structures owned, operated maintained or served by municipal utilities. Also, the small wireless statutory requirements do not invalidate agreements in place at the time of enactment of the 2017 amendments (May 31, 2017).

The siting of DAS or new small cell technologies also must comply with the same restrictions under federal law that apply to large cell sitings. Specifically, a city:

- May not unreasonably discriminate among providers of functionally equivalent services.
- May not regulate in a manner that prohibits or has the effect of prohibiting the provision of personal wireless services.
- Must act on applications within a reasonable time.
- Must make any denial of an application in writing supported by substantial evidence in a written record.

Because of the complexities in the state law and the overlay of federal regulations, some cities have found it a best practice to adopt or amend a telecommunications right-of-way ordinance separate from their general right-of-way management ordinance. Cities that do not choose to adopt separate ordinances, at a minimum, should work with their attorney to review and amend their existing right-of-way ordinances, if necessary, to accommodate for telecommunications right-of-way users and the recent state law amendments for small wireless facilities. For example, since state law now recognizes small wireless facilities as a permitted use, zoning ordinances that require conditional use permits for these facilities likely will need amending.

Since wireless providers seek to attach their small cell and DAS equipment to city-owned structures, many cities choose to have a separate agreement in place to address terms and conditions not included in ordinances or permits. If the city chooses to do so, the law requires the city to have these agreements available in a substantial form so applicants can anticipate the terms and conditions. Again, cities should work with the city attorney to draft a template agreement governing attachment of wireless facilities to municipally owned structures in the right of way.

RELEVANT LINKS:

Section 6409(a) of the Middle Class Tax Relief and Job Creation Act of 2012, codified at 47 U.S.C. § 1455.

FCC Public Notice AD 12-2047 (January 25, 2013).

FCC 14-153, Report & Order (October 21, 2014).

FCC Public Notice AD 12-2047 (January 25, 2013).

FCC Public Notice AD 12-2047 (January 25, 2013).

City of Arlington Texas, et al. v. FCC, et al., 133 S.Ct. 1863, 1867 (2013) (90 days to process collocation application and 150 days to process all other applications, relying on §332(c)(7)(B)(ii)).

This model ordinance and other information can be found at National Association of Counties Website.

With the nationwide trend encouraging deployment of these new technologies, if a city denies an application, it must do so in writing and provide detailed reasonable findings that document the health, welfare, and safety reasons for the denial. With the unique circumstances of each community often raising concerns about sitings, cities may benefit from proactively working with providers.

B. Modifications of existing telecommunication structures

If a siting request proposes *modifications to and/or collocations of wireless transmission equipment on existing FCC-regulated towers or base stations*, then federal law further limits local municipal control. Specifically, federal law requires cities to grant requests for modifications or collocation to existing *FCC-regulated structures* when that modification would not “substantially change” the physical dimensions of the tower or base station.

The FCC has established guidelines on what “substantially change the physical dimensions” means and what constitutes a “wireless tower or base station.”

Once small cell equipment or antennas gets placed on that pole, then the pole becomes a telecommunication structure subject to federal law and FCC regulations. Accordingly, after allowing collocation once, the city then must comply with the more restrictive federal laws that allow modifications to these structures that do not substantially change the physical dimensions of the pole, like having equipment from the other cell carriers.

Under this law, it appears cities cannot ask an applicant who is requesting modification for documentation information other than how the modification impacts the physical dimensions of the structure. Accordingly, documentation illustrating the need for such wireless facilities or justifying the business decision likely cannot be requested. Of course, as with the other siting requests, state and local zoning authorities must take prompt action on these siting applications for wireless facilities (60-day shot clock rule).

Two wireless industry associations, the WIA (formerly known as the PCIA) and CTIA, collaborated with the National League of Cities, the National Association of Counties, and the National Association of Telecommunications Officers and Advisors to: (1) develop a model ordinance and application for reviewing eligible small cell/DAS facilities requests under federal law; (2) discuss and distribute wireless siting best practices; (3) create a checklist that local government officials can use to help streamline the review process; and (4) hold webinars regarding the application process.

RELEVANT LINKS:

Minn. Stat. § 237.163, Subd. 2(d), Chapter 94, Art. 9, 2017 Regular Session.

III. Moratoriums

The cellular industry often challenges moratoriums used to stall placement of cell towers, as well as small cell/DAS technology, until cities can address regulation of these structures. Generally, these providers argue that these moratoriums do one of the following:

- Prohibit or have the effect of prohibiting the provision of personal wireless services.
- Violate federal law by failing to act on an application within a reasonable time.

State law now prohibits moratoriums with respect to: (1) filing, receiving, or processing applications for right-of-way or small wireless facility permits; or (2) issuing or approving right-of-way or small wireless facility permits. For cities that did not have an ordinance enabling it to manage its right-of-way on or before May 18, 2017, the prohibition on moratoria does not take effect until January 1, 2018, giving those cities an opportunity to enact an ordinance regulating its public rights-of-way.

IV. Conclusion

With the greater use of calls and data associated with mobile technology, cities likely will see more new cell towers, as well as small cell technology/DAS requests. Consequently, it would make sense to proactively review city regulations to ensure consistency with federal and state law, while still retaining control over the deployment of structures and the use of rights of way.

Appendix A: Sample Ordinances and Sample Agreements

Many cities address cell towers in their ordinances already. For informational purposes only, the links below reference some telecommunications facilities ordinances in Minnesota. PLEASE NOTE, these ordinances reflect each city's unique circumstances and may pre-date the 2017 Legislative Session which, then, would not have considered the amendments to Minn. Stat. §§ 237.162, 237.163 when drafted.

Sample Telecommunications Ordinances

Revised Model Right-of-Way Ordinance

City of Edina (predates 2017 amendments)

Ordinance: (Chapter 34: Telecommunications)

City of Brainerd

Memo to Planning Commission from City Planner, July 13, 2017 Re: Draft Ordinance: Section 35: Antennas and Towers

City of Minneapolis

Ordinance: (Amendment to Ordinance to accommodate Small Cell/DAS equipment)

CPED Staff Report, City of Minneapolis regarding Amendment

City of Bloomington

Ordinance: (Part II City Code, Chapter 17: Streets and Rights-of-Way)

Ordinance: (No. 2017-16. Amending Section 14.03 of the City Code Concerning the Permit Fee)

Permit: Small Cell Permit

Sample Collocation Agreement for DAS/Small Cell

Texas City Attorney Association

Addendum to Local Gov. Code, Chapter 283

San Antonio, Texas

Boston, Massachusetts

San Francisco, California

League of Minnesota Cities Model Small Wireless Facility Collocation Agreement

City of Menahga 2019 Preliminary Budget

115 2nd Street NE, Menahga

www.cityofmenahga.com



2019 General Fund Expenditures

chgs made
9/18
proposed
discussion

	2017 Budget	2017 Actual	2018 Budget	2018 Actual YTD	2019 Budget	2019 Budget	Proposed Changes
41110 Mayor and Council							
E 101-41110-101 Salaries	\$ 12,600.00	\$ 11,310.00	\$ 12,600.00	\$ -	\$ 12,600.00	\$ 12,600.00	\$ -
E 101-41110-122 Social Security	\$ 800.00	\$ 701.22	\$ 800.00	\$ -	\$ 800.00	\$ 800.00	\$ -
E 101-41110-128 Medicare	\$ 200.00	\$ 164.00	\$ 200.00	\$ -	\$ 200.00	\$ 200.00	\$ -
E 101-41110-131 Employer Paid Health	\$ -	\$ -	\$ -	\$ -	\$ -	\$ -	\$ -
E 101-41110-134 Travel & Conference	\$ 200.00	\$ 166.56	\$ 200.00	\$ -	\$ 200.00	\$ 200.00	\$ -
E 101-41110-331 Travel & Conference	\$ 2,000.00	\$ 1,256.11	\$ 2,000.00	\$ -	\$ 2,000.00	\$ 2,000.00	\$ -
E 101-41110-367 Workers Compensation	\$ -	\$ -	\$ -	\$ -	\$ -	\$ -	\$ -
E 101-41110-430 Miscellaneous Expense	\$ -	\$ 135.60	\$ -	\$ -	\$ -	\$ -	\$ -
E 101-41110-433 Dues and Subscriptions	\$ -	\$ 30.00	\$ -	\$ -	\$ -	\$ -	\$ -
Total Mayor and Council:	\$ 15,800.00	\$ 13,763.49	\$ 15,800.00	\$ -	\$ 15,800.00	\$ 15,800.00	\$ -

	2017 Budget	2017 Actual	2018 Budget	2018 Actual	2019 Budget	2019 Budget	Proposed Changes
41200 Planning Commission							
E 101-41200-101 Salaries	\$ -	\$ -	\$ 3,000.00	\$ -	\$ 3,000.00	\$ 3,000.00	\$ -
E 101-41200-122 Social Security	\$ -	\$ -	\$ 200.00	\$ -	\$ 200.00	\$ 200.00	\$ -
E 101-41200-128 Medicare	\$ -	\$ -	\$ 100.00	\$ -	\$ 100.00	\$ 100.00	\$ -
E 101-41200-131 Employer Paid Health	\$ -	\$ -	\$ -	\$ -	\$ -	\$ -	\$ -
E 101-41200-134 Travel & Conference	\$ -	\$ -	\$ 200.00	\$ -	\$ 200.00	\$ 200.00	\$ -
E 101-41200-331 Travel & Conference	\$ -	\$ -	\$ 1,000.00	\$ -	\$ 1,000.00	\$ 1,000.00	\$ -
E 101-41200-367 Workers Compensation	\$ -	\$ -	\$ -	\$ -	\$ -	\$ -	\$ -
E 101-41200-430 Miscellaneous Expense	\$ -	\$ -	\$ -	\$ -	\$ -	\$ -	\$ -
E 101-41200-433 Dues and Subscriptions	\$ -	\$ -	\$ 350.00	\$ -	\$ 350.00	\$ 350.00	\$ -
Total Planning Commission:	\$ -	\$ -	\$ 4,850.00	\$ -	\$ 4,850.00	\$ 4,850.00	\$ -

	2017 Budget	2017 Actual	2018 Budget	2018 Actual YTD	2019 Budget	W/ .50 Increase	W/ .50 Increase
41400 City Administration							
E 101-41400-101 Salaries	\$ 128,960.00	\$ 124,208.48	\$ 132,000.00	\$ 77,983.75	\$ 129,542.00	\$ 132,663.00	\$ 132,663.00
E 101-41400-102 Admin Salary In	\$ (42,990.00)	\$ (43,350.00)	\$ (43,750.00)	\$ (25,757.65)	\$ (43,181.00)	\$ (44,221.00)	\$ (44,221.00)
E 101-41400-121 PERA	\$ -	\$ -	\$ -	\$ -	\$ -	\$ -	\$ -
E 101-41400-122 Social Security	\$ 9,700.00	\$ 9,756.15	\$ 9,800.00	\$ 4,978.43	\$ 9,715.68	\$ 9,950.00	\$ 9,950.00
E 101-41400-128 Medicare	\$ 8,000.00	\$ 7,117.70	\$ 8,200.00	\$ 4,766.13	\$ 8,031.63	\$ 8,226.00	\$ 8,226.00
E 101-41400-131 Employer Paid Health	\$ 1,875.00	\$ 1,774.53	\$ 2,000.00	\$ 1,114.66	\$ 1,878.36	\$ 1,924.00	\$ 1,924.00
E 101-41400-134 Employer Paid Life	\$ 35,500.00	\$ 37,932.68	\$ 37,000.00	\$ 18,794.06	\$ 30,226.00	\$ 30,226.00	\$ 30,226.00
E 101-41400-135 Employer Paid Annuity	\$ 200.00	\$ 199.80	\$ 200.00	\$ 88.80	\$ 200.00	\$ 200.00	\$ 200.00
E 101-41400-200 Office Supplies	\$ 4,000.00	\$ -	\$ 4,500.00	\$ 2,233.24	\$ 4,500.00	\$ 4,500.00	\$ 4,000.00
E 101-41400-210 Operating Supplies	\$ 1,000.00	\$ 435.32	\$ 1,000.00	\$ 120.00	\$ 1,000.00	\$ 1,000.00	\$ 500.00
E 101-41400-220 Repair & Maintenance	\$ 1,000.00	\$ -	\$ 1,000.00	\$ -	\$ 1,000.00	\$ 1,000.00	\$ 500.00
E 101-41400-305 Professional Services	\$ -	\$ 597.55	\$ 500.00	\$ 286.00	\$ 500.00	\$ 500.00	\$ 500.00
E 101-41400-313 Economic Development	\$ -	\$ -	\$ 15,000.00	\$ 2,250.00	\$ 5,000.00	\$ 5,000.00	\$ 5,000.00
E 101-41400-321 Telephone/Fax	\$ 2,900.00	\$ 2,428.71	\$ 2,900.00	\$ 1,337.97	\$ 2,800.00	\$ 2,800.00	\$ 2,800.00
E 101-41400-322 Postage	\$ 700.00	\$ 1,369.79	\$ 700.00	\$ 500.00	\$ 900.00	\$ 900.00	\$ 900.00
E 101-41400-331 Travel & Conference	\$ 3,000.00	\$ 3,743.33	\$ 4,500.00	\$ 2,685.58	\$ 4,500.00	\$ 4,500.00	\$ 4,000.00
E 101-41400-350 Printing & Publishing	\$ 5,000.00	\$ 6,401.43	\$ 5,000.00	\$ 4,124.77	\$ 4,500.00	\$ 4,500.00	\$ 4,500.00
E 101-41400-430 Miscellaneous Expense	\$ 100.00	\$ 18.76	\$ 100.00	\$ 20.00	\$ 100.00	\$ 100.00	\$ 100.00
E 101-41400-433 Dues and Subscriptions	\$ 11,500.00	\$ 12,751.00	\$ 11,500.00	\$ 1,461.00	\$ 15,000.00	\$ 15,000.00	\$ 15,000.00
E 101-41400-500 Capital Outlay	\$ 5,000.00	\$ 3,023.05	\$ 5,000.00	\$ -	\$ 5,000.00	\$ 5,000.00	\$ 5,000.00
Total City Administration:	\$ 175,445.00	\$ 173,874.69	\$ 197,150.00	\$ 96,986.74	\$ 181,212.67	\$ 183,768.00	\$ 181,768.00

2019 General Fund Expenditures

	2017 Budget	2017 Actual	2018 Budget	2018 Actual YTD	2019 Budget	W/.50 Increase	W/.50 Increase
41410 Elections							
E 101-41410-101 Salaries	\$ -	\$ -	\$ 1,500.00	\$ -	\$ -	\$ -	\$ -
E 101-41410-350 Printing & Publishing	\$ -	\$ -	\$ 500.00	\$ -	\$ -	\$ -	\$ -
E 101-41410-430 Miscellaneous Expense	\$ -	\$ 166.50	\$ 950.00	\$ -	\$ -	\$ -	\$ -
E 101-41410-500 Capital Outlay	\$ 1,000.00	\$ -	\$ 1,000.00	\$ -	\$ 1,000.00	\$ 1,000.00	\$ 1,000.00
Total Elections:	\$ 1,000.00	\$ 166.50	\$ 3,950.00	\$ -	\$ 1,000.00	\$ 1,000.00	\$ 1,000.00

	2017 Budget	2017 Actual	2018 Budget	2018 Actual YTD	2019 Budget	W/.50 Increase	W/.50 Increase
41500 Contractual Services							
E 101-41500-301 Auditing Services	\$ 20,250.00	\$ 15,850.00	\$ 11,500.00	\$ 7,450.00	\$ 15,000.00	\$ 15,000.00	\$ 15,000.00
E 101-41500-304 Legal Services	\$ 2,500.00	\$ 3,210.00	\$ 2,500.00	\$ 7,140.00	\$ 10,000.00	\$ 10,000.00	\$ 10,000.00
E 101-41500-305 Professional Services	\$ 2,500.00	\$ 4,969.40	\$ 2,500.00	\$ 2,200.00	\$ 4,000.00	\$ 4,000.00	\$ 4,000.00
E 101-41500-306 Personnel Medical Testing	\$ -	\$ -	\$ -	\$ -	\$ -	\$ -	\$ -
E 101-41500-309 Computer Support Services	\$ 3,500.00	\$ 4,757.32	\$ 7,500.00	\$ 1,603.40	\$ 7,500.00	\$ 7,500.00	\$ 7,500.00
E 101-41500-430 Miscellaneous Expense	\$ -	\$ 133.02	\$ -	\$ -	\$ -	\$ -	\$ -
E 101-41500-435 Building Inspection Fees	\$ -	\$ -	\$ -	\$ -	\$ -	\$ -	\$ -
Total Contractual Services:	\$ 28,750.00	\$ 28,919.74	\$ 24,000.00	\$ 18,393.40	\$ 36,500.00	\$ 36,500.00	\$ 36,500.00

	2017 Budget	2017 Actual	2018 Budget	2018 Actual YTD	2019 Budget	W/.50 Increase	W/.50 Increase
41940 Government Buildings							
E 101-41940-210 Operating Supplies	\$ 1,850.00	\$ 1,487.25	\$ 1,850.00	\$ 1,015.98	\$ 2,000.00	\$ 2,000.00	\$ 2,000.00
E 101-41940-220 Repair & Maintenance	\$ 3,500.00	\$ 11,418.98	\$ 7,000.00	\$ *780.54	\$ 8,000.00	\$ 8,000.00	\$ 8,000.00
E 101-41940-381 Electric Utilities	\$ 8,750.00	\$ 6,283.14	\$ 7,500.00	\$ *3,813.94	\$ 7,500.00	\$ 7,500.00	\$ 7,500.00
E 101-41940-382 Water/Sewer Utilities	\$ 2,000.00	\$ 1,493.89	\$ 1,500.00	\$ *1,017.80	\$ 1,750.00	\$ 1,750.00	\$ 1,750.00
E 101-41940-383 Gas Utilities	\$ 3,000.00	\$ 2,277.66	\$ 3,000.00	\$ *2,045.71	\$ 3,516.00	\$ 3,516.00	\$ 3,516.00
E 101-41940-384 Garbage Services	\$ 750.00	\$ 882.48	\$ 750.00	\$ *509.55	\$ 900.00	\$ 900.00	\$ 900.00
E 101-41940-386 Cleaning Services	\$ 900.00	\$ 1,551.30	\$ 900.00	\$ *531.98	\$ 900.00	\$ 900.00	\$ 900.00
E 101-41940-430 Miscellaneous Expense	\$ -	\$ 201.11	\$ -	\$ *0.00	\$ -	\$ -	\$ -
E 101-41940-580 Other Equipment	\$ 8,000.00	\$ 2,805.15	\$ 6,500.00	\$ 710.30	\$ 7,000.00	\$ 7,000.00	\$ 7,000.00
Total Government Buildings:	\$ 28,750.00	\$ 28,400.96	\$ 29,000.00	\$ 10,425.80	\$ 31,566.00	\$ 31,566.00	\$ 25,566.00

	2017 Budget	2017 Actual	2018 Budget	2018 Actual YTD	2019 Budget	W/.50 Increase	W/.50 Increase
42110 Police Department							
E 101-42110-101 Salaries	\$ 130,500.00	\$ 128,343.72	\$ 131,500.00	\$ 63,565.87	\$ 145,222.00	\$ 148,342.00	\$ 148,342.00
E 101-42110-103 Part-time Salaries	\$ 31,000.00	\$ 34,164.28	\$ 31,000.00	\$ 19,624.58	\$ 32,000.00	\$ 32,000.00	\$ 27,000.00
E 101-42110-104 Admin Salaries	\$ 8,700.00	\$ 8,700.00	\$ 9,000.00	\$ 5,250.00	\$ 8,636.00	\$ 8,844.00	\$ 8,844.00
E 101-42110-121 PERA	\$ 26,100.00	\$ 25,884.40	\$ 26,100.00	\$ 14,981.40	\$ 30,881.00	\$ 31,019.00	\$ 30,159.00
E 101-42110-122 Social Security	\$ -	\$ 169.11	\$ 250.00	\$ 248.34	\$ 250.00	\$ 250.00	\$ 250.00
E 101-42110-128 Medicare	\$ 2,500.00	\$ 2,329.22	\$ 2,500.00	\$ 1,365.48	\$ 2,570.00	\$ 2,615.00	\$ 2,543.00
E 101-42110-131 Employer Paid Health	\$ 28,500.00	\$ 27,074.29	\$ 35,000.00	\$ 20,197.72	\$ 35,048.00	\$ 35,048.00	\$ 35,048.00
E 101-42110-134 Employer Paid Life	\$ 150.00	\$ 194.25	\$ 200.00	\$ 88.80	\$ 200.00	\$ 200.00	\$ 200.00
E 101-42110-135 Employer Paid Annuity	\$ -	\$ -	\$ -	\$ -	\$ -	\$ -	\$ -
E 101-42110-200 Office Supplies	\$ 600.00	\$ 728.92	\$ 600.00	\$ 290.43	\$ 800.00	\$ 800.00	\$ 800.00
E 101-42110-210 Operating Supplies	\$ 5,000.00	\$ 2,554.49	\$ 5,000.00	\$ 3,012.83	\$ 6,000.00	\$ 6,000.00	\$ 6,000.00
E 101-42110-212 Motor Fuels & Lubricants	\$ 11,000.00	\$ 8,140.92	\$ 11,000.00	\$ 6,480.52	\$ 12,000.00	\$ 12,000.00	\$ 12,000.00
E 101-42110-217 Uniform Allowance	\$ 2,500.00	\$ 3,592.39	\$ 2,500.00	\$ 1,856.18	\$ 2,500.00	\$ 2,500.00	\$ 2,500.00
E 101-42110-220 Repair & Maintenance	\$ 6,000.00	\$ 6,197.89	\$ 6,000.00	\$ 3,332.60	\$ 6,500.00	\$ 6,500.00	\$ 6,500.00
E 101-42110-304 Legal Services	\$ 12,000.00	\$ 9,707.00	\$ 12,000.00	\$ 5,622.50	\$ 12,000.00	\$ 12,000.00	\$ 12,000.00

YTD OT \$2,315

2019 General Fund Expenditures

E 101-42110-321 Telephone/Fax	\$ 4,000.00	\$ 4,178.35	\$ 4,000.00	\$ 2,322.68	\$ 4,000.00	\$ 4,000.00	\$ 4,000.00	\$ 4,000.00
E 101-42110-331 Travel & Conference	\$ 2,000.00	\$ 2,202.65	\$ 2,500.00	\$ 1,022.62	\$ 2,500.00	\$ 2,500.00	\$ 2,500.00	\$ 2,500.00
E 101-42110-350 Printing & Publishing	\$ 600.00	\$ 105.00	\$ 600.00	\$ 47.25	\$ 500.00	\$ 500.00	\$ 500.00	\$ 500.00
E 101-42110-417 Animal Control Costs	\$ 500.00	\$ 88.00	\$ 150.00	\$ -	\$ 150.00	\$ 150.00	\$ 150.00	\$ 150.00
E 101-42110-418 Squad Car Lease	\$ -	\$ -	\$ -	\$ -	\$ -	\$ -	\$ -	\$ -
E 101-42110-421 Squad Car Equipment	\$ 3,500.00	\$ 3,312.00	\$ 3,500.00	\$ 1,932.00	\$ 3,500.00	\$ 3,500.00	\$ 3,500.00	\$ 3,500.00
E 101-42110-433 Dues and Subscriptions	\$ 225.00	\$ 1,051.00	\$ 800.00	\$ 372.00	\$ 800.00	\$ 800.00	\$ 800.00	\$ 800.00
E 101-42110-437 Licenses & Permits	\$ 4,000.00	\$ 333.53	\$ 350.00	\$ 95.00	\$ 350.00	\$ 350.00	\$ 350.00	\$ 350.00
E 101-42110-500 Capital Outlay	\$ 4,000.00	\$ 2,008.47	\$ 4,000.00	\$ -	\$ 4,000.00	\$ 4,000.00	\$ 4,000.00	\$ 4,000.00
E 101-42110-990 Transfer Out	\$ 15,000.00	\$ 15,000.00	\$ 10,000.00	\$ 6,449.35	\$ 20,000.00	\$ 20,000.00	\$ 20,000.00	\$ 15,000.00
Total Police Department:	\$ 294,575.00	\$ 286,059.88	\$ 298,550.00	\$ 158,158.15	\$ 330,407.00	\$ 333,918.00	\$ 333,918.00	\$ 322,986.00

42115 Police Forfeitures	2017 Budget	2017 Actual	2018 Budget	2018 Actual YTD	2019 Budget	W/ .50 Increase	W/ .50 Increase
E 101-42115-500 Capital Outlay	\$ -	\$ -	\$ -	\$ -	\$ -	\$ -	\$ -
E 101-42115-580 Other Equipment	\$ -	\$ -	\$ -	\$ -	\$ -	\$ -	\$ -
Total Police Forfeitures:	\$ -	\$ -	\$ -	\$ -	\$ -	\$ -	\$ -

42120 Hooked on Fishing	2017 Budget	2017 Actual	2018 Budget	2018 Actual YTD	2019 Budget	W/ .50 Increase	W/ .50 Increase
E 101-42120-210 Operating Supplies	\$ 3,500.00	\$ -	\$ -	\$ -	\$ -	\$ -	\$ -
Total Hooked on Fishing:	\$ 3,500.00	\$ -	\$ -	\$ -	\$ -	\$ -	\$ -

42200 Fire Department	2017 Budget	2017 Actual	2018 Budget	2018 Actual YTD	2019 Budget	W/ .50 Increase	W/ .50 Increase
E 101-42200-101 Salaries	\$ 13,500.00	\$ 13,355.00	\$ 13,500.00	\$ -	\$ 14,000.00	\$ 14,000.00	\$ 14,000.00
E 101-42200-104 Admin Salaries	\$ 1,300.00	\$ 1,300.44	\$ 2,200.00	\$ 1,283.35	\$ 2,159.00	\$ 2,211.00	\$ 2,211.00
E 101-42200-122 Social Security	\$ 800.00	\$ 828.01	\$ 800.00	\$ -	\$ 868.00	\$ 868.00	\$ 868.00
E 101-42200-124 Fire Relief Annual Contrib	\$ 3,000.00	\$ 3,000.00	\$ 3,000.00	\$ -	\$ 3,000.00	\$ 3,000.00	\$ 3,000.00
E 101-42200-128 Medicare	\$ 200.00	\$ 193.69	\$ 200.00	\$ -	\$ 203.00	\$ 203.00	\$ 203.00
E 101-42200-210 Operating Supplies	\$ 3,000.00	\$ 7,639.15	\$ 3,000.00	\$ 2,937.44	\$ 4,000.00	\$ 4,000.00	\$ 4,000.00
E 101-42200-212 Motor Fuels & Lubricants	\$ 3,500.00	\$ 1,969.29	\$ 3,500.00	\$ 2,700.26	\$ 4,000.00	\$ 4,000.00	\$ 4,000.00
E 101-42200-220 Repair & Maintenance	\$ 10,000.00	\$ 9,601.78	\$ 10,000.00	\$ 10,521.10	\$ 10,000.00	\$ 10,000.00	\$ 10,000.00
E 101-42200-225 Safety Equipment	\$ 100.00	\$ -	\$ 100.00	\$ -	\$ 100.00	\$ 100.00	\$ 100.00
E 101-42200-305 Professional Services	\$ -	\$ -	\$ -	\$ -	\$ -	\$ -	\$ -
E 101-42200-306 Personnel Medical Testing	\$ 2,000.00	\$ -	\$ 2,000.00	\$ -	\$ 2,000.00	\$ 2,000.00	\$ 2,000.00
E 101-42200-321 Telephone/Fax	\$ 500.00	\$ 555.63	\$ 500.00	\$ 356.78	\$ 500.00	\$ 500.00	\$ 500.00
E 101-42200-331 Travel & Conference	\$ 7,850.00	\$ 9,569.63	\$ 2,532.00	\$ 5,885.30	\$ 3,000.00	\$ 3,000.00	\$ 3,000.00
E 101-42200-350 Printing & Publishing	\$ 100.00	\$ 63.00	\$ 100.00	\$ -	\$ 100.00	\$ 100.00	\$ 100.00
E 101-42200-411 Fire Relief State Aid	\$ -	\$ 15,478.62	\$ -	\$ -	\$ 11,250.00	\$ 11,250.00	\$ 11,250.00
E 101-42200-430 Miscellaneous Expense	\$ -	\$ -	\$ -	\$ -	\$ -	\$ -	\$ -
E 101-42200-433 Dues and Subscriptions	\$ 150.00	\$ 242.00	\$ 150.00	\$ 1,131.00	\$ 150.00	\$ 150.00	\$ 150.00
E 101-42200-437 Licenses & Permits	\$ 250.00	\$ 10.00	\$ 250.00	\$ 10.00	\$ 250.00	\$ 250.00	\$ 250.00
E 101-42200-438 Building Addition	\$ -	\$ -	\$ -	\$ -	\$ -	\$ -	\$ -
E 101-42200-500 Capital Outlay	\$ 6,000.00	\$ 17,885.84	\$ 6,000.00	\$ 4,376.01	\$ 6,000.00	\$ 6,000.00	\$ 6,000.00
E 101-42200-990 Transfer Out	\$ -	\$ -	\$ 5,000.00	\$ -	\$ -	\$ -	\$ -
Total Fire Department:	\$ 52,250.00	\$ 81,692.08	\$ 52,832.00	\$ 29,349.24	\$ 61,580.00	\$ 61,632.00	\$ 61,632.00

mut aid & exams

2019 General Fund Expenditures

42300 Disaster Event	2017 Budget	2017 Actual	2018 Budget	2018 Actual YTD	2019 Budget	W/ .50 Increase	W/ .50 Increase
E 101-42300-208 Training and Instruction	\$ 500.00	\$ -	\$ 500.00	\$ -	\$ 500.00	\$ 500.00	\$ 500.00
Total Disaster Event:	\$ 500.00	\$ -	\$ 500.00	\$ -	\$ 500.00	\$ 500.00	\$ 500.00

43100 Street Department	2017 Budget	2017 Actual	2018 Budget	2018 Actual YTD	2019 Budget	W/ .50 Increase	W/ .50 Increase
E 101-43100-101 Salaries	\$ 33,500.00	\$ 35,342.40	\$ 34,000.00	\$ 21,124.57	\$ 37,075.54	\$ 37,949.54	\$ 37,949.54
E 101-43100-104 Admin Salaries	\$ 6,500.00	\$ 6,499.56	\$ 6,750.00	\$ 3,937.50	\$ 6,412.33	\$ 6,566.74	\$ 6,566.74
E 101-43100-121 PERA	\$ 2,500.00	\$ 2,598.75	\$ 2,750.00	\$ 1,554.06	\$ 2,781.00	\$ 2,847.00	\$ 2,847.00
E 101-43100-122 Social Security	\$ 2,100.00	\$ 2,165.06	\$ 2,200.00	\$ 1,298.38	\$ 2,299.00	\$ 2,353.00	\$ 2,353.00
E 101-43100-128 Medicare	\$ 500.00	\$ 506.38	\$ 525.00	\$ 303.66	\$ 538.00	\$ 551.00	\$ 551.00
E 101-43100-131 Employer Paid Health	\$ 9,775.00	\$ 10,595.56	\$ 10,750.00	\$ 6,843.33	\$ 11,363.00	\$ 11,363.00	\$ 11,363.00
E 101-43100-134 Employer Paid Life	\$ 60.00	\$ 55.98	\$ 60.00	\$ 28.02	\$ 67.00	\$ 67.00	\$ 67.00
E 101-43100-135 Employer Paid Annuity	\$ -	\$ -	\$ -	\$ 28.02	\$ -	\$ -	\$ -
E 101-43100-210 Operating Supplies	\$ 3,500.00	\$ 5,972.44	\$ 3,500.00	\$ 3,699.89	\$ 5,000.00	\$ 5,000.00	\$ 5,000.00
E 101-43100-212 Motor Fuels & Lubricants	\$ 15,000.00	\$ 7,388.95	\$ 15,000.00	\$ 8,857.69	\$ 15,000.00	\$ 15,000.00	\$ 15,000.00
E 101-43100-220 Repair & Maintenance	\$ 10,000.00	\$ 27,945.63	\$ 16,500.00	\$ 9,154.31	\$ 20,000.00	\$ 20,000.00	\$ 20,000.00
E 101-43100-221 Street & Road Repair	\$ 6,500.00	\$ -	\$ 6,500.00	\$ 300.00	\$ 6,500.00	\$ 6,500.00	\$ 6,500.00
E 101-43100-225 Safety Equipment	\$ 500.00	\$ -	\$ 500.00	\$ 88.80	\$ 500.00	\$ 500.00	\$ 500.00
E 101-43100-321 Telephone/Fax	\$ 1,200.00	\$ 1,143.94	\$ 1,200.00	\$ 733.18	\$ 1,400.00	\$ 1,400.00	\$ 1,400.00
E 101-43100-331 Travel & Conference	\$ 2,000.00	\$ -	\$ 2,000.00	\$ 250.00	\$ 1,000.00	\$ 1,000.00	\$ 1,000.00
E 101-43100-350 Printing & Publishing	\$ 200.00	\$ 325.50	\$ 350.00	\$ -	\$ 200.00	\$ 200.00	\$ 200.00
E 101-43100-381 Electric Utilities	\$ 3,000.00	\$ 2,249.94	\$ 3,000.00	\$ 1,662.98	\$ 3,000.00	\$ 3,000.00	\$ 3,000.00
E 101-43100-383 Gas Utilities	\$ 1,500.00	\$ 2,261.12	\$ 2,500.00	\$ -	\$ 2,500.00	\$ 2,500.00	\$ 2,500.00
E 101-43100-384 Garbage Services	\$ 1,350.00	\$ 882.48	\$ 1,350.00	\$ 445.83	\$ 900.00	\$ 900.00	\$ 900.00
E 101-43100-433 Dues and Subscriptions	\$ 100.00	\$ -	\$ 100.00	\$ -	\$ -	\$ -	\$ -
E 101-43100-437 Licenses & Permits	\$ 100.00	\$ 10.00	\$ 100.00	\$ 106.00	\$ 100.00	\$ 100.00	\$ 100.00
E 101-43100-500 Capital Outlay	\$ 2,500.00	\$ 5,556.00	\$ 5,000.00	\$ 2,988.00	\$ 5,000.00	\$ 5,000.00	\$ 5,000.00
E 101-43100-560 Head Start Expenses	\$ 1,500.00	\$ 311.80	\$ 1,500.00	\$ 116.50	\$ 1,000.00	\$ 1,000.00	\$ 1,000.00
E 101-43100-610 Interest (Loan Payment)	\$ 3,250.00	\$ 4,580.45	\$ -	\$ -	\$ -	\$ -	\$ -
E 101-43100-990 Transfer Out	\$ 10,000.00	\$ 4,850.00	\$ -	\$ -	\$ -	\$ -	\$ -
Total Street Department:	\$ 117,135.00	\$ 121,241.94	\$ 116,135.00	\$ 63,492.70	\$ 122,635.87	\$ 123,797.28	\$ 123,797.28

43160 Street Lighting	2017 Budget	2017 Actual	2018 Budget	2018 Actual YTD	2019 Budget	W/ .50 Increase	W/ .50 Increase
E 101-43160-220 Repair & Maintenance	\$ 200.00	\$ -	\$ 200.00	\$ -	\$ 300.00	\$ 300.00	\$ 300.00
E 101-43160-381 Electric Utilities	\$ 15,000.00	\$ 16,212.78	\$ 15,000.00	\$ 8,618.39	\$ 16,000.00	\$ 16,000.00	\$ 16,000.00
E 101-43160-500 Capital Outlay	\$ -	\$ -	\$ -	\$ -	\$ -	\$ -	\$ -
Total Street Lighting:	\$ 15,200.00	\$ 16,212.78	\$ 15,200.00	\$ 8,618.39	\$ 16,300.00	\$ 16,300.00	\$ 16,300.00

43170 Seal Coat - Capital Outlay	2017 Budget	2017 Actual	2018 Budget	2018 Actual YTD	2019 Budget	W/ .50 Increase	W/ .50 Increase
E 101-43170-221 Street & Road Repair	\$ 14,000.00	\$ -	\$ 14,000.00	\$ -	\$ 50,000.00	\$ 50,000.00	\$ 14,000.00
E 101-43170-303 Engineering Fees	\$ -	\$ -	\$ -	\$ -	\$ -	\$ -	\$ -
E 101-43170-990 Transfer Out	\$ -	\$ 14,000.00	\$ -	\$ -	\$ -	\$ -	\$ -
Total Seal Coat - Capital Outlay:	\$ 14,000.00	\$ 14,000.00	\$ 14,000.00	\$ -	\$ 50,000.00	\$ 50,000.00	\$ 14,000.00

45120 City Beach	2017 Budget	2017 Actual	2018 Budget	2018 Actual YTD	2019 Budget	W/ .50 Increase	W/ .50 Increase
E 101-45120-101 Salaries	\$ 7,000.00	\$ 6,068.49	\$ 7,000.00	\$ 3,647.92	\$ 7,504.64	\$ 8,060.00	\$ 8,060.00

2019 General Fund Expenditures

	2017 Budget	2017 Actual	2018 Budget	2018 Actual YTD	2019 Budget	W/ .50 Increase	W/ .50 Increase	Ralph's wages
E 101-45120-103 Part-time Salaries	\$ 10,000.00	\$ 9,105.51	\$ 10,000.00	\$ 7,914.76	\$ 10,000.00	\$ 10,000.00	\$ 10,000.00	
E 101-45120-105 Unemployment	\$ 500.00	\$ -	\$ 500.00	\$ -	\$ 500.00	\$ 500.00	\$ 500.00	
E 101-45120-121 PERA	\$ 450.00	\$ 455.13	\$ 550.00	\$ 273.57	\$ 563.00	\$ 605.00	\$ 605.00	
E 101-45120-122 Social Security	\$ 500.00	\$ 937.00	\$ 500.00	\$ 715.48	\$ 1,085.29	\$ 1,119.72	\$ 1,119.72	
E 101-45120-128 Medicare	\$ 100.00	\$ 219.20	\$ 125.00	\$ 167.32	\$ 254.00	\$ 262.00	\$ 262.00	
E 101-45120-131 Employer Paid Health	\$ 1,350.00	\$ 1,405.38	\$ 1,500.00	\$ 765.71	\$ 1,512.00	\$ 1,512.00	\$ 1,512.00	
E 101-45120-134 Employer Paid Life	\$ 15.00	\$ 13.32	\$ 15.00	\$ 6.60	\$ 15.00	\$ 15.00	\$ 15.00	
E 101-45120-210 Operating Supplies	\$ 1,500.00	\$ 2,719.21	\$ 3,500.00	\$ 957.32	\$ 3,500.00	\$ 3,500.00	\$ 3,500.00	
E 101-45120-220 Repair & Maintenance	\$ 1,000.00	\$ 3,667.42	\$ 12,500.00	\$ 709.00	\$ 2,500.00	\$ 2,500.00	\$ 2,500.00	
E 101-45120-305 Professional Services	\$ 150.00	\$ -	\$ 150.00	\$ -	\$ 150.00	\$ 150.00	\$ 150.00	
E 101-45120-325 Internet	\$ 160.00	\$ 308.50	\$ 350.00	\$ 97.73	\$ 350.00	\$ 350.00	\$ 350.00	
E 101-45120-331 Travel & Conference	\$ -	\$ 170.00	\$ 250.00	\$ 300.00	\$ 300.00	\$ 300.00	\$ 300.00	
E 101-45120-350 Printing & Publishing	\$ 500.00	\$ 273.00	\$ 500.00	\$ 204.75	\$ 500.00	\$ 500.00	\$ 500.00	
E 101-45120-382 Water/Sewer Utilities	\$ 300.00	\$ 309.41	\$ 300.00	\$ 175.32	\$ 300.00	\$ 300.00	\$ 300.00	
E 101-45120-384 Garbage Services	\$ 300.00	\$ 240.68	\$ 300.00	\$ 76.05	\$ 200.00	\$ 200.00	\$ 200.00	
E 101-45120-420 Depreciation Expense	\$ -	\$ -	\$ -	\$ -	\$ -	\$ -	\$ -	
E 101-45120-433 Dues and Subscriptions	\$ -	\$ -	\$ -	\$ -	\$ -	\$ -	\$ -	
E 101-45120-500 Capital Outlay	\$ 2,500.00	\$ -	\$ 2,500.00	\$ -	\$ 2,500.00	\$ 2,500.00	\$ 2,500.00	
Total City Beach:	\$ 26,375.00	\$ 25,892.25	\$ 40,540.00	\$ 16,011.53	\$ 31,733.93	\$ 32,373.72	\$ 32,373.72	

	2017 Budget	2017 Actual	2018 Budget	2018 Actual YTD	2019 Budget	W/ .50 Increase	W/ .50 Increase
45200 City Park	7,000.00	8,440.38	10,500.00	7,172.59	11,256.96	11,568.00	11,568.00
E 101-45200-101 Salaries	\$ 7,000.00	\$ 8,440.38	\$ 10,500.00	\$ 7,172.59	\$ 11,256.96	\$ 11,568.00	\$ 11,568.00
E 101-45200-103 Part-time Salaries	\$ 7,500.00	\$ 10,352.04	\$ 7,500.00	\$ 5,336.20	\$ 9,500.00	\$ 9,500.00	\$ 9,500.00
E 101-45200-121 PERA	\$ 525.00	\$ 633.03	\$ 800.00	\$ 513.21	\$ 1,136.00	\$ 1,159.00	\$ 1,159.00
E 101-45200-122 Social Security	\$ 425.00	\$ 1,159.87	\$ 850.00	\$ 772.86	\$ 1,528.00	\$ 1,547.00	\$ 1,547.00
E 101-45200-128 Medicare	\$ 100.00	\$ 271.30	\$ 250.00	\$ 180.75	\$ 358.00	\$ 362.00	\$ 362.00
E 101-45200-131 Employer Paid Health	\$ 1,350.00	\$ 1,416.44	\$ 2,200.00	\$ 1,153.47	\$ 2,268.00	\$ 2,268.00	\$ 2,268.00
E 101-45200-134 Employer Paid Life	\$ 15.00	\$ 13.32	\$ 15.00	\$ 9.96	\$ 15.00	\$ 15.00	\$ 15.00
E 101-45200-135 Employer Paid Annuity	\$ -	\$ -	\$ -	\$ -	\$ -	\$ -	\$ -
E 101-45200-210 Operating Supplies	\$ 2,000.00	\$ 2,727.37	\$ 2,500.00	\$ 3,355.09	\$ 3,500.00	\$ 3,500.00	\$ 3,500.00
E 101-45200-220 Repair & Maintenance	\$ 2,500.00	\$ 13,996.76	\$ 12,500.00	\$ 2,813.50	\$ 7,000.00	\$ 7,000.00	\$ 7,000.00
E 101-45200-225 Safety Equipment	\$ 250.00	\$ -	\$ 250.00	\$ -	\$ 100.00	\$ 100.00	\$ 100.00
E 101-45200-321 Telephone/Fax	\$ -	\$ -	\$ -	\$ -	\$ -	\$ -	\$ -
E 101-45200-325 Internet	\$ 160.00	\$ 242.89	\$ 200.00	\$ 123.38	\$ 250.00	\$ 250.00	\$ 250.00
E 101-45200-331 Travel & Conference	\$ -	\$ 31.50	\$ -	\$ -	\$ -	\$ -	\$ -
E 101-45200-350 Printing & Publishing	\$ 250.00	\$ 31.50	\$ 250.00	\$ 243.00	\$ 300.00	\$ 300.00	\$ 300.00
E 101-45200-381 Electric Utilities	\$ 2,000.00	\$ 2,334.63	\$ 2,500.00	\$ 778.74	\$ 1,800.00	\$ 1,800.00	\$ 1,800.00
E 101-45200-382 Water/Sewer Utilities	\$ 400.00	\$ 343.95	\$ 400.00	\$ 166.16	\$ 300.00	\$ 300.00	\$ 300.00
E 101-45200-384 Garbage Services	\$ 600.00	\$ 540.41	\$ 600.00	\$ 105.30	\$ 400.00	\$ 400.00	\$ 400.00
E 101-45200-420 Depreciation Expense	\$ -	\$ -	\$ -	\$ -	\$ -	\$ -	\$ -
E 101-45200-433 Dues and Subscriptions	\$ 300.00	\$ 310.00	\$ 300.00	\$ 330.00	\$ 350.00	\$ 350.00	\$ 350.00
E 101-45200-437 Licenses & Permits	\$ 100.00	\$ 98.00	\$ 100.00	\$ -	\$ -	\$ -	\$ -
E 101-45200-500 Capital Outlay	\$ 2,500.00	\$ 12,352.56	\$ 2,500.00	\$ -	\$ 2,500.00	\$ 2,500.00	\$ 2,500.00
E 101-45200-530 Improvements Other Than Bldgs	\$ -	\$ -	\$ -	\$ -	\$ -	\$ -	\$ -
E 101-45200-600 Principal	\$ 6,100.00	\$ -	\$ 6,100.00	\$ 6,968.27	\$ 7,000.00	\$ 7,000.00	\$ 7,000.00
E 101-45200-610 Interest	\$ 1,950.00	\$ 1,904.61	\$ 1,950.00	\$ 1,764.98	\$ 1,950.00	\$ 1,950.00	\$ 1,950.00
E 101-45200-990 Transfer Out	\$ 1,500.00	\$ 14,000.00	\$ 1,500.00	\$ 875.00	\$ 1,500.00	\$ 1,500.00	\$ 1,500.00
Total City Park:	\$ 37,525.00	\$ 71,169.06	\$ 53,765.00	\$ 32,662.46	\$ 53,011.96	\$ 53,504.00	\$ 53,504.00

2019 General Fund Expenditures

	2017 Budget	2017 Actual	2018 Budget	2018 Actual YTD	2019 Budget	W/ .50 Increase	W/ .50 Increase
49200 Unallocated Expenses							
E 101-49200-105 Unemployment	\$ 500.00	\$ 169.07	\$ 500.00	\$ 880.63	\$ 1,000.00	\$ 1,000.00	\$ 1,000.00
E 101-49200-361 General Liability Ins	\$ 13,500.00	\$ 13,703.00	\$ 13,500.00	\$ 14,101.00	\$ 14,000.00	\$ 14,000.00	\$ 14,000.00
E 101-49200-362 Property Insurance	\$ 14,500.00	\$ 11,466.00	\$ 14,500.00	\$ 11,706.00	\$ 13,500.00	\$ 13,500.00	\$ 13,500.00
E 101-49200-363 Automotive Insurance	\$ 7,000.00	\$ 6,459.00	\$ 7,000.00	\$ 6,518.00	\$ 7,500.00	\$ 7,500.00	\$ 7,500.00
E 101-49200-365 Errors & Omissions Ins	\$ 1,200.00	\$ 479.00	\$ 1,200.00	\$ 1,108.00	\$ 1,200.00	\$ 1,200.00	\$ 1,200.00
E 101-49200-366 Volunteer Insurance	\$ 150.00	\$ -	\$ 150.00	\$ -	\$ 150.00	\$ 150.00	\$ 150.00
E 101-49200-367 Workers Compensation	\$ 32,000.00	\$ 37,093.00	\$ 40,000.00	\$ 21,411.60	\$ 32,000.00	\$ 32,000.00	\$ 32,000.00
E 101-49200-368 City Pd Tax & Assessment	\$ 15,000.00	\$ 587.00	\$ 15,000.00	\$ 587.00	\$ 12,000.00	\$ 12,000.00	\$ 12,000.00
E 101-49200-439 ECPN State Payment	\$ -	\$ -	\$ -	\$ -	\$ -	\$ -	\$ -
E 101-49200-441 GPA PERA Rate Aid	\$ 11,600.00	\$ 11,517.00	\$ 11,600.00	\$ 5,758.50	\$ 11,600.00	\$ 11,600.00	\$ 11,600.00
E 101-49200-990 Transfer Out	\$ -	\$ 22,308.25	\$ -	\$ -	\$ -	\$ -	\$ -
E 101-49200-991 Transfer Out - Cap Eq Fund	\$ 20,000.00	\$ 20,000.00	\$ 20,000.00	\$ 11,666.65	\$ 40,000.00	\$ 40,000.00	\$ 40,000.00
Total Unallocated Expenses:	\$ 115,450.00	\$ 123,781.32	\$ 123,450.00	\$ 73,737.38	\$ 132,950.00	\$ 132,950.00	\$ 121,950.00
Total General Fund Expenditures:	\$ 926,255.00	\$ 985,174.69	\$ 989,722.00	\$ 507,835.79	\$ 1,070,047.43	\$ 1,078,459.00	\$ 1,012,027.00

(4850) +PC

2019 General Fund Revenue

R 101-00000-36228 Police Forfeiture Money	\$ -	\$ -	\$ -	\$ -	\$ -	\$ -	\$ -	\$ -	\$ -
R 101-00000-36230 Contributions and Donations	\$ -	\$ 2,070.00	\$ -	\$ -	\$ 4,800.00	\$ -	\$ -	\$ -	\$ -
R 101-00000-36231 Police Open Car Doors	\$ -	\$ 50.00	\$ -	\$ -	\$ -	\$ -	\$ -	\$ -	\$ -
R 101-00000-36233 ECPN Reimbursement	\$ -	\$ -	\$ -	\$ -	\$ -	\$ -	\$ -	\$ -	\$ -
R 101-00000-36234 Refunds - Insurance	\$ -	\$ -	\$ -	\$ -	\$ 315.00	\$ -	\$ -	\$ -	\$ -
R 101-00000-36235 Refunds & Reimbursements	\$ -	\$ -	\$ -	\$ -	\$ 1,353.15	\$ -	\$ -	\$ -	\$ -
R 101-00000-36236 Insurance Proceeds	\$ -	\$ -	\$ -	\$ -	\$ 166.40	\$ -	\$ -	\$ -	\$ -
R 101-00000-36237 LMC Insurance Dividends	\$ 4,000.00	\$ 4,400.00	\$ 4,000.00	\$ -	\$ -	\$ -	\$ -	\$ -	\$ -
R 101-00000-36238 Dividends/Patronage	\$ 950.00	\$ 1,523.41	\$ 950.00	\$ 738.13	\$ -	\$ 950.00	\$ -	\$ 950.00	\$ -
R 101-00000-39101 Sales of General Fixed Assets	\$ -	\$ 2,607.00	\$ -	\$ -	\$ -	\$ -	\$ -	\$ -	\$ -
R 101-00000-39202 Transfer from Water Fund	\$ -	\$ -	\$ -	\$ -	\$ -	\$ -	\$ -	\$ -	\$ -
R 101-00000-39203 Transfer from Sewer Fund	\$ -	\$ -	\$ -	\$ -	\$ -	\$ -	\$ -	\$ -	\$ -
R 101-00000-39204 Transfer from Liquor Fund	\$ 62,500.00	\$ 62,500.00	\$ 62,500.00	\$ 36,458.30	\$ 62,500.00	\$ -	\$ -	\$ 62,500.00	\$ -
R 101-00000-39310 Bond Proceeds	\$ -	\$ -	\$ -	\$ -	\$ -	\$ -	\$ -	\$ -	\$ -
R 101-00000-99000 Transfer In	\$ -	\$ 15,000.00	\$ 25,000.00	\$ -	\$ -	\$ -	\$ -	\$ -	\$ -
R 101-42115-36228 Police Forfeiture Money	\$ -	\$ 415.00	\$ -	\$ 3,000.00	\$ -	\$ -	\$ 1,500.00	\$ -	\$ -
R 101-42120-35105 Administrative Citations	\$ -	\$ -	\$ -	\$ 3,000.00	\$ 680.00	\$ -	\$ -	\$ -	\$ 1,500.00
R 101-42120-36230 Contributions and Donations	\$ 3,500.00	\$ -	\$ -	\$ -	\$ -	\$ -	\$ -	\$ -	\$ -
R 101-42200-36235 Refunds & Reimbursements	\$ 7,810.00	\$ 9,798.00	\$ 2,532.00	\$ 3,050.00	\$ 2,500.00	\$ -	\$ -	\$ -	\$ 2,500.00
Total:	\$ 926,255.00	\$ 965,683.06	\$ 989,722.00	\$ 526,083.55	\$ 624,165.50	\$ 624,165.50	\$ 631,196.00	\$ 631,196.00	\$ 631,196.00

2018

	\$ 603,841.00	venue prior to levy:	\$ 657,293.00	venue prior to levy:	\$ 624,165.50		\$ 631,196.00
	\$ 322,414.00	2018 Levy:	\$ 332,429.00	2019 Levy:	\$ 449,443.50		\$ 380,831.00
	\$ 926,255.00	2018 Total:	\$ 989,722.00	2019 Total:	\$ 1,073,609.00		\$ 1,012,027.00

15%

Adopted Amt 9/10

2019 601 Water Fund

E 601-49400-225 Safety Equipment	\$	304.39	\$	-	\$	1,000.00	\$	937.80	\$	1,000.00	\$	1,000.00	\$	1,000.00
E 601-49400-301 Auditing Services	\$	1,382.00	\$	1,400.00	\$	1,400.00	\$	1,400.00	\$	1,500.00	\$	1,500.00	\$	1,500.00
E 601-49400-304 Legal Services	\$	-	\$	630.00	\$	500.00	\$	-	\$	500.00	\$	500.00	\$	500.00
E 601-49400-305 Professional Services	\$	1,561.54	\$	965.15	\$	850.00	\$	205.68	\$	600.00	\$	600.00	\$	600.00
E 601-49400-309 Computer Support Services	\$	1,620.00	\$	1,085.00	\$	4,500.00	\$	-	\$	2,550.00	\$	2,550.00	\$	2,550.00
E 601-49400-312 Contract Maintenance	\$	-	\$	-	\$	5,000.00	\$	-	\$	2,450.00	\$	2,450.00	\$	2,450.00
E 601-49400-321 Telephone/Fax	\$	1,193.35	\$	1,294.83	\$	1,000.00	\$	841.58	\$	1,600.00	\$	1,600.00	\$	1,600.00
E 601-49400-322 Postage	\$	1,565.51	\$	1,718.94	\$	1,500.00	\$	740.72	\$	1,500.00	\$	1,500.00	\$	1,500.00
E 601-49400-331 Travel & Conference	\$	506.60	\$	1,218.58	\$	2,500.00	\$	104.68	\$	1,500.00	\$	1,500.00	\$	1,500.00
E 601-49400-350 Printing & Publishing	\$	1,235.13	\$	588.00	\$	1,000.00	\$	1,257.38	\$	1,000.00	\$	1,000.00	\$	1,000.00
E 601-49400-361 General Liability Ins	\$	820.00	\$	769.00	\$	850.00	\$	711.50	\$	850.00	\$	850.00	\$	850.00
E 601-49400-362 Property Insurance	\$	1,764.00	\$	1,713.00	\$	1,800.00	\$	1,766.00	\$	1,766.00	\$	1,766.00	\$	1,766.00
E 601-49400-363 Automotive Insurance	\$	100.00	\$	106.00	\$	150.00	\$	140.00	\$	150.00	\$	150.00	\$	150.00
E 601-49400-367 Workers Compensation	\$	2,156.00	\$	2,072.00	\$	3,150.00	\$	1,968.00	\$	3,150.00	\$	3,150.00	\$	3,150.00
E 601-49400-381 Electric Utilities	\$	12,700.75	\$	16,774.23	\$	18,000.00	\$	9,048.58	\$	18,000.00	\$	18,000.00	\$	18,000.00
E 601-49400-420 Depreciation Expense	\$	-	\$	-	\$	70,000.00	\$	-	\$	-	\$	-	\$	-
E 601-49400-433 Dues and Subscriptions	\$	250.00	\$	250.00	\$	400.00	\$	-	\$	400.00	\$	400.00	\$	400.00
E 601-49400-437 Licenses & Permits	\$	206.66	\$	213.22	\$	1,000.00	\$	232.21	\$	1,000.00	\$	1,000.00	\$	1,000.00
E 601-49400-440 Bad Debt Expense	\$	-	\$	-	\$	-	\$	-	\$	-	\$	-	\$	-
E 601-49400-500 Capital Outlay	\$	3,938.44	\$	6,093.64	\$	10,000.00	\$	9,636.78	\$	19,708.00	\$	19,708.00	\$	19,708.00
E 601-49400-600 Principal	\$	-	\$	-	\$	13,000.00	\$	-	\$	14,000.00	\$	14,000.00	\$	14,000.00
E 601-49400-610 Interest	\$	-	\$	-	\$	3,300.00	\$	-	\$	2,570.00	\$	2,570.00	\$	2,570.00
E 601-49400-630 Special Assessment Refund	\$	-	\$	24,481.85	\$	-	\$	-	\$	-	\$	-	\$	-
E 601-49400-990 Transfer Out	\$	-	\$	-	\$	-	\$	-	\$	-	\$	-	\$	-
Total Expenses:	\$	128,418.83	\$	138,697.10	\$	239,215.00	\$	93,911.48	\$	190,377.93	\$	191,773.09	\$	186,240.76

PFA Debt/2015B Bonds - Expenses

E 601-49420-600 Principal	\$	15,000.00	\$	13,550.68	\$	15,000.00	\$	13,550.68	\$	14,000.00	\$	14,000.00	\$	14,000.00
E 601-49420-610 Interest	\$	1,590.00	\$	2,802.70	\$	1,590.00	\$	2,802.70	\$	2,570.00	\$	2,570.00	\$	2,570.00
Total Expenses:	\$	16,590.00	\$	16,353.38	\$	16,590.00	\$	16,353.38	\$	16,570.00	\$	16,570.00	\$	16,570.00

Water On Call

added on call for 2018 will be approximately \$40,000. If we have one person on call, it reduces the amount to \$10,000 per dept. Ralph-currently budgeted for \$9,500 in parks, add \$7,500 ea. for water and sewer

2019 602 Sewer Fund

	2016 Actual	2017 Actual	2018 Budget	2018 Actual	2019 Budget	.50 Increase	Revised 10/18
602 Sewer Fund - Revenues							
R 602-00000-33405 Spec Assess - Current	\$ 4,018.20	\$ 10,295.95	\$ 3,500.00	\$ 2,135.44	\$ 3,500.00	\$ 3,500.00	\$ 3,500.00
R 602-00000-33407 Spec Assess - Delinquent	\$ 736.62	\$ 92.53	\$ 750.00	\$ 2,438.23	\$ 750.00	\$ 750.00	\$ 750.00
R 602-00000-33411 Spec Assess Penalty/Interk	\$ 246.58	\$ 2,056.87	\$ 500.00	\$ 1,356.05	\$ 500.00	\$ 500.00	\$ 500.00
R 602-00000-34955 Miscellaneous Receipts	\$ -	\$ 75.71	\$ -	\$ 54.88	\$ -	\$ -	\$ -
R 602-00000-36200 Interest Earnings	\$ 2,769.19	\$ 2,453.98	\$ 500.00	\$ 196.31	\$ 200.00	\$ 200.00	\$ 200.00
R 602-00000-37130 Customer CR Bal	\$ -	\$ -	\$ -	\$ -	\$ -	\$ -	\$ -
R 602-00000-37160 Penalties/Interest	\$ 683.53	\$ 3,077.91	\$ 750.00	\$ 1,744.68	\$ 750.00	\$ 750.00	\$ 750.00
R 602-00000-37200 Sewer Revenues	\$ 165,593.79	\$ 166,888.72	\$ 185,000.00	\$ 95,275.10	\$ 165,000.00	\$ 165,000.00	\$ 169,572.00
R 602-00000-37240 Sewer Pond Fee 2008	\$ 96,929.78	\$ 98,385.82	\$ 100,000.00	\$ 55,914.92	\$ 100,000.00	\$ 100,000.00	\$ 100,000.00
R 602-00000-39310 Bond Proceeds	\$ -	\$ -	\$ -	\$ -	\$ -	\$ -	\$ -
R 602-00000-99000 Transfer In	\$ -	\$ -	\$ -	\$ -	\$ -	\$ -	\$ -
Total:	\$ 270,977.69	\$ 283,327.49	\$ 291,000.00	\$ 159,115.61	\$ 270,700.00	\$ 270,700.00	\$ 275,272.00
602 Sewer Fund - Expenses							
E 602-49450-101 Salaries	\$ 33,863.27	\$ 31,265.24	\$ 33,500.00	\$ 20,748.78	\$ 36,578.83	\$ 37,618.83	\$ 37,618.83
E 602-49450-103 Part-time Salaries (on call)	\$ -	\$ -	\$ 6,000.00	\$ 11,317.45	\$ 14,000.00	\$ 14,000.00	\$ 17,500.00
E 602-49450-104 Admin Salaries	\$ 5,900.00	\$ 7,639.00	\$ 8,300.00	\$ 4,841.65	\$ 8,204.39	\$ 8,401.99	\$ 8,401.99
E 602-49450-121 PERA	\$ 2,539.72	\$ 2,560.92	\$ 2,600.00	\$ 2,380.28	\$ 3,793.42	\$ 3,871.42	\$ 3,571.35
E 602-49450-122 Social Security	\$ 2,073.70	\$ 2,072.10	\$ 2,300.00	\$ 1,971.59	\$ 3,135.89	\$ 3,200.37	\$ 3,417.37
E 602-49450-128 Medicare	\$ 485.03	\$ 493.33	\$ 550.00	\$ 461.08	\$ 733.40	\$ 748.48	\$ 799.22
E 602-49450-131 Employer Paid Health	\$ 9,136.63	\$ 10,389.86	\$ 10,500.00	\$ 6,775.97	\$ 12,473.00	\$ 12,473.00	\$ 12,473.00
E 602-49450-134 Employer Paid Life	\$ 66.60	\$ 55.29	\$ 65.00	\$ 27.66	\$ 65.00	\$ 65.00	\$ 65.00
E 602-49450-210 Operating Supplies	\$ 14,481.40	\$ 24,040.01	\$ 20,000.00	\$ 5,980.15	\$ 16,000.00	\$ 16,000.00	\$ 16,000.00
E 602-49450-212 Motor Fuels & Lubricants	\$ 1,159.24	\$ 1,357.07	\$ 2,500.00	\$ 831.59	\$ 1,700.00	\$ 1,700.00	\$ 1,700.00
E 602-49450-220 Repair & Maintenance	\$ 36,959.24	\$ 38,138.19	\$ 35,000.00	\$ 37,687.07	\$ 40,000.00	\$ 40,000.00	\$ 40,000.00
E 602-49450-225 Safety Equipment	\$ 304.39	\$ -	\$ 500.00	\$ -	\$ 250.00	\$ 250.00	\$ 250.00
E 602-49450-301 Auditing Services	\$ 1,382.00	\$ 1,400.00	\$ 1,400.00	\$ 1,400.00	\$ 1,500.00	\$ 1,500.00	\$ 1,500.00
E 602-49450-304 Legal Services	\$ -	\$ 104.00	\$ 150.00	\$ -	\$ 150.00	\$ 150.00	\$ 150.00
E 602-49450-305 Professional Services	\$ 9,178.00	\$ 931.10	\$ 2,500.00	\$ 597.02	\$ 1,200.00	\$ 1,200.00	\$ 1,200.00
E 602-49450-309 Computer Support Services	\$ 1,620.00	\$ 1,085.00	\$ 4,500.00	\$ -	\$ 2,550.00	\$ 2,550.00	\$ 2,550.00
E 602-49450-321 Telephone/Fax	\$ 809.44	\$ 837.49	\$ 750.00	\$ 536.48	\$ 800.00	\$ 800.00	\$ 800.00
E 602-49450-322 Postage	\$ 1,453.37	\$ 1,557.22	\$ 1,250.00	\$ 696.85	\$ 1,400.00	\$ 1,400.00	\$ 1,400.00
E 602-49450-331 Travel & Conference	\$ 57.01	\$ 2,079.77	\$ 1,500.00	\$ 104.68	\$ 1,000.00	\$ 1,000.00	\$ 1,000.00
E 602-49450-350 Printing & Publishing	\$ -	\$ -	\$ 250.00	\$ 28.87	\$ 250.00	\$ 250.00	\$ 250.00
E 602-49450-361 General Liability Ins	\$ 821.00	\$ 768.00	\$ 900.00	\$ 711.50	\$ 900.00	\$ 900.00	\$ 900.00
E 602-49450-362 Property Insurance	\$ 1,838.00	\$ 1,785.00	\$ 1,800.00	\$ 1,840.00	\$ 1,800.00	\$ 1,800.00	\$ 1,800.00
E 602-49450-363 Automotive Insurance	\$ 99.00	\$ 149.00	\$ 100.00	\$ 140.00	\$ 150.00	\$ 150.00	\$ 150.00
E 602-49450-367 Workers Compensation	\$ 1,676.00	\$ 3,014.00	\$ 3,000.00	\$ 2,098.00	\$ 3,300.00	\$ 3,300.00	\$ 3,300.00
E 602-49450-381 Electric Utilities	\$ 4,608.37	\$ 4,904.52	\$ 5,000.00	\$ 2,627.77	\$ 6,000.00	\$ 6,000.00	\$ 6,000.00
E 602-49450-420 Depreciation Expense	\$ -	\$ -	\$ 102,000.00	\$ -	\$ 102,000.00	\$ -	\$ -
E 602-49450-433 Dues and Subscriptions	\$ -	\$ -	\$ 300.00	\$ -	\$ 300.00	\$ 300.00	\$ 300.00
E 602-49450-437 Licenses & Permits	\$ 353.00	\$ 390.00	\$ 500.00	\$ 376.00	\$ 500.00	\$ 500.00	\$ 500.00

2019 602 Sewer Fund

E 602-49450-500 Capital Outlay	\$	8,736.06	\$	25,944.26	\$	12,000.00	\$	-	\$	12,000.00	\$	12,000.00	\$	12,000.00
E 602-49450-600 Principal	\$	90,000.00	\$	85,000.00	\$	85,000.00	\$	-	\$	90,000.00	\$	90,000.00	\$	90,000.00
E 602-49450-610 Interest	\$	5,055.49	\$	5,847.50	\$	6,000.00	\$	2,647.50	\$	4,530.00	\$	4,530.00	\$	4,530.00
E 602-49450-620 Fiscal Agent Fees	\$	-	\$	-	\$	-	\$	-	\$	-	\$	-	\$	-
E 602-49450-630 Special Assessment Refund	\$	-	\$	19,411.52	\$	-	\$	-	\$	-	\$	-	\$	-
E 602-49450-990 Transfer Out	\$	-	\$	-	\$	-	\$	-	\$	-	\$	-	\$	-
Total:	\$	234,655.96	\$	273,219.39	\$	350,715.00	\$	106,827.94	\$	367,263.93	\$	266,659.09	\$	270,126.76

Main Lift Station Project - Expenses

E 602-49460-302 Construction Expense	\$	128,888.48	\$	-	\$	-	\$	-	\$	-	\$	-	\$	-
E 602-49460-303 Engineering Fees	\$	2,477.50	\$	-	\$	-	\$	-	\$	-	\$	-	\$	-
E 602-49460-350 Printing & Publishing	\$	-	\$	-	\$	-	\$	-	\$	-	\$	-	\$	-
E 602-49460-600 Principal	\$	40,000.00	\$	35,000.00	\$	35,000.00	\$	-	\$	40,000.00	\$	40,000.00	\$	40,000.00
E 602-49460-610 Interest	\$	2,269.85	\$	2,627.50	\$	3,000.00	\$	1,200.00	\$	2,040.00	\$	2,040.00	\$	2,040.00
Total:	\$	173,635.83	\$	37,627.50	\$	38,000.00	\$	1,200.00	\$	42,040.00	\$	42,040.00	\$	42,040.00

Water rates

per Customer	12
s	1000

#REF!	#REF!	2016	2017	2018	2019	2020	2021	2022	2023	2024	2025	2026	2027	2028
-------	-------	------	------	------	------	------	------	------	------	------	------	------	------	------

		7.50%	7.50%	8.00%	8.25%	8.50%	8.75%	9.00%	9.25%	9.50%	9.50%	9.50%	9.50%	9.50%
--	--	-------	-------	-------	-------	-------	-------	-------	-------	-------	-------	-------	-------	-------

# of connection	Fixed Fee Rates
395	13.70
17	13.70
42	13.70
25	13.70

Fixed Fee Revenues
64,914
2,794
6,902
4,109

of connection

78,719	84,623	91,181	98,476	106,600	115,661	125,781	137,101	149,783	164,013	179,594	196,655	215,337
--------	--------	--------	--------	---------	---------	---------	---------	---------	---------	---------	---------	---------

Rates
2.30
2.88
3.88
2.30
2.88
3.88
2.35
2.70
3.24
2.35
2.70
3.24

2.47	2.66	2.88	3.11	3.38	3.68	4.01	4.38	4.79	5.25	5.75	6.29
3.09	3.33	3.60	3.89	4.22	4.59	5.01	5.47	5.99	6.56	7.18	7.86
4.17	4.50	4.86	5.26	5.70	6.20	6.76	7.39	8.09	8.85	9.70	10.62
2.47	2.66	2.88	3.11	3.38	3.68	4.01	4.38	4.79	5.25	5.75	6.29
3.09	3.33	3.60	3.89	4.22	4.59	5.01	5.47	5.99	6.56	7.18	7.86
4.17	4.50	4.86	5.26	5.70	6.20	6.76	7.39	8.09	8.85	9.70	10.62
2.53	2.72	2.94	3.18	3.45	3.75	4.09	4.47	4.90	5.36	5.87	6.43
2.91	3.13	3.38	3.66	3.97	4.32	4.71	5.14	5.63	6.17	6.75	7.39
3.49	3.76	4.06	4.39	4.76	5.18	5.65	6.17	6.76	7.40	8.10	8.87
2.53	2.72	2.94	3.18	3.45	3.75	4.09	4.47	4.90	5.36	5.87	6.43
2.91	3.13	3.38	3.66	3.97	4.32	4.71	5.14	5.63	6.17	6.75	7.39
3.49	3.76	4.06	4.39	4.76	5.18	5.65	6.17	6.76	7.40	8.10	8.87



Water Rates

per Customer	12
s	1000

#REF!
#REF!

#REF!

ages for 2015 Projections

Units

	2016	2017	2018	2019	2020	2021	2022	2023	2024	2025	2026	2027	2028
7,908	18,188	19,553	21,068	22,753	24,630	26,724	29,062	31,678	34,608	37,896	41,496	45,438	49,755
4,531	13,026	14,003	15,089	16,296	17,640	19,140	20,814	22,688	24,786	27,141	29,779	32,543	35,634
4,744	18,412	19,793	21,327	23,033	24,933	27,052	29,419	32,067	35,033	38,361	42,006	45,996	50,366
2,890	6,647	7,145	7,699	8,315	9,001	9,766	10,621	11,576	12,647	13,849	15,164	16,605	18,182
511	1,468	1,578	1,701	1,837	1,988	2,157	2,346	2,557	2,794	3,059	3,350	3,668	4,017
0	0	0	0	0	0	0	0	0	0	0	0	0	0
1,595	3,749	4,030	4,342	4,690	5,077	5,508	5,990	6,529	7,133	7,811	8,553	9,366	10,255
723	1,953	2,099	2,262	2,443	2,644	2,869	3,120	3,401	3,715	4,068	4,455	4,878	5,341
3,037	9,850	10,589	11,409	12,322	13,338	14,472	15,739	17,155	18,742	20,522	22,472	24,607	26,944
704	1,655	1,779	1,917	2,070	2,241	2,431	2,644	2,882	3,148	3,447	3,775	4,134	4,526
461	1,247	1,340	1,444	1,560	1,689	1,832	1,992	2,172	2,373	2,598	2,845	3,115	3,411
5,114	16,586	17,830	19,212	20,749	22,461	24,370	26,502	28,887	31,559	34,558	37,840	41,435	45,372
emues	92,761	99,739	107,469	116,067	125,642	136,322	148,250	161,592	176,540	193,311	211,675	231,785	253,804

L REVENUES	2016	2017	2018	2019	2020	2021	2022	2023	2024	2025	2026	2027	2028
	171,500	184,362	198,650	214,542	232,242	251,982	274,031	298,694	326,323	357,323	391,269	428,440	469,142



Campground Revenues/Expenses

	2016	2017	2018
Park Fees	\$ 16,556.51	\$ 19,539.06	\$ 23,706.66

Geocaching Event Approx: 1,030.00

Dump Station	\$ 1,005.79	\$ 1,464.71	\$ 1,748.00
--------------	-------------	-------------	-------------

Credit Card Costs			\$ (1,678.33)
-------------------	--	--	---------------

Wiring/Return Signs		\$ (3,768.68)	101
---------------------	--	---------------	-----

Improvements	\$(12,352.56)	\$ (8,700.40)	406
--------------	---------------	---------------	-----

Frisbee Golf		\$ (6,968.27)	101
--------------	--	---------------	-----

Loan Payments - ?

2018 Squad Car Expense

Vendor	Description	Cost	Pd From	
Ford of Hibbing	2018 Ford Explorer	\$ 31,083.45	406	
Emergency Automotive	Soundoff solid state tail light	\$ 44.40	406	
	Triple accessory outlet	\$ 19.37	406	
	Magnetic mic clip	\$ 34.95	406	
	Feniex cannon 12 LED hideaway	\$ 154.56	406	
	Freight	\$ 25.00	406	
Emergency Automotive	Whelen Ion Super LED Mirror Beam	\$ 240.70	406	
Emergency Automotive	Setina Polycarb recessed panel	\$ 647.20	406	
	Setina Wire Mesh rear partition	\$ 327.20	406	
	Setina Steel pushbumper	\$ 279.20	406	
	Fender Protection Bar	\$ 306.75	406	
	Setina Vertical system, shotgun lockhead el	\$ 231.75	406	
	Pro-gard Safe-stop ignition override	\$ 121.80	406	
	Pro-gard Steel window bars	\$ 163.80	406	
	Freight	\$ 250.00	406	
Emergency Automotive	Whelen Ion Duo linear Super LED light	\$ 117.74	406	
	Freight	\$ 20.00	406	
Emergency Automotive	Gamber Johnson console	\$ 220.80	406	
	Gamber Johnson armrest pocketjet printer	\$ 235.80	406	
	Gamber Johnson slide-arm tilt swivel	\$ 188.30	406	
	2 Lam TIR 3 Super LED Dominator	\$ 270.28	406	
Emergency Automotive	Whelen Model Siren	\$ 399.00	406	
	Whelen Ion linear Super LED light	\$ 117.74	406	
	Feniex fusion light stick 4 head	\$ 222.88	406	
	Feniex fusion surface mount lighthouse	\$ 88.48	406	
	Feniex fusion surface mount lighthouse	\$ 88.48	406	
	Feniex fusion interior light bar	\$ 558.88	406	
	Feniex fusion light stick 6 head	\$ 323.68	406	
	Freight	\$ 21.65	406	
Emergency Automotive	Speaker	\$ 179.20	406	
	Solid State Headlight flasher	\$ 41.31	406	
	Whelen IonV3 lighthouse V-shaped warning	\$ 157.18	406	
	Whelen IonV3 lighthouse V-shaped warning	\$ 157.18	406	
	90 degree angle brackets	\$ 14.50	406	
	Freight	\$ 19.39	406	
Computer Info System	Panasonic Toughbook	\$ 4,300.00	406	
Signs & Designs	PD Badge decals	\$ 66.00	406	
Watchguard Video	In-car camera and software	\$ 5,020.00	406	\$ 46,758.60
Emergency Automotive	Replacement PTW Ballast module	\$ 85.00	101	
	Freight	\$ 16.42	101	
Emergency Automotive	Gamber Johnson Self contained radio	\$ 23.80	101	
	Gamber Johnson Cupholder	\$ 42.00	101	
	Bosch 75A spst relay 4 terminal dual contact	\$ 30.00	101	
	Freight	\$ 16.56	101	
	Weathertech Custom fit floor liner	\$ 89.00	101	
	Freight	\$ 25.00	101	
	Gamber Johnson Dual Aux/USB ext	\$ 39.20	101	
	Freight	\$ 17.51	101	
	Gamber Johnson 6' USB printer cable	\$ 15.00	101	
	Pentax Pocket jet car cable	\$ 27.00	101	
	Freight	\$ 17.51	101	
	Santa Cruz Roll bar overhead mount gunlock	\$ 213.74	101	
	Freight	\$ 34.06	101	
Star Squads	Removal of wiring from old squad	\$ 525.00	101	
	Install wiring in new squad	\$ 2,200.00	101	
Signs & Designs	White magnet to cover police badge	\$ 20.00	101	
John's Car Care	Install astro start	\$ 262.51	101	\$ 3,699.31

Total Cost of 2018 Squad

\$ 50,457.91

Wadena

Gina Ellingson

From: Public Works <publicworks@wadena.org>
Sent: Wednesday, October 3, 2018 5:43 PM
To: Gina Ellingson
Subject: Re: question

Gina, we have 8 crew members that rotate the on call weeks, they switch Monday morning at 7:00 am. We pay the on call person 4 hours wages at OT for the week just for being on call. They get a 2 hour minimum OT pay for each time they get called in. If they need a second person they choose from the remaining staff preferably someone that is lower on OT hours to call and assist them. The person called in also gets a minimum of 2 hours at OT. Hopefully this helps, if you have any other questions just let me know.

Sent from my iPhone

On Oct 3, 2018, at 12:17 PM, Gina Ellingson <cmenahga@wcta.net> wrote:

Perham

Gina Ellingson

From: Merle Meece <mmeece@cityofperham.com>
Sent: Friday, October 5, 2018 8:06 AM
To: Gina Ellingson
Subject: RE: question about on call

Gina,

The way the city handles on call is as follows. One employee is on call starting on a Thursday and stays on call until the next Thursday. They take calls on everything that the Public Works cover. If they need help they will call in another employee to help, no one else is on call so it is whoever he can get a hold of. The employee on call gets the Friday after their call ends off for being on call.

Merle

From: Gina Ellingson [mailto:cmenahga@wcta.net]
Sent: Thursday, October 4, 2018 5:36 PM
To: Merle Meece <mmeece@cityofperham.com>
Subject: question about on call

Hi Merle,

I am wondering if you could tell me how Perham handles on call for the public works employees. Do you have more than one person on call at a time? If you only have only one person on call, who do they call in if another person is needed, for instance for confined entry situations?

Thank-you,

Gina

Gina Ellingson City Administrator
City of Menahga 115 2nd Street Northeast
Menahga, MN 56464 218-564-4557
cityofmenahga.com

Gina Ellingson

From: Kyle Mattson-City of New York Mills <nympublicworks@gmail.com>
Sent: Thursday, October 4, 2018 10:26 AM
To: cmenahga@wcta.net
Subject: Re: on call questions
Attachments: NYM On Call October 2018.docx

Gina,

We only have one person on call for evenings and weekends, which are week long shifts (7am Friday to 7am Friday), and the rotation is split between four of us in the Utility Department (gas, water, sewer). In the event of an emergency or a situation where one has to enter a confined space we will call in an additional staff member(s) to assist, if no utility staff are available at the time we can call for an assist from Fire Department staff since they are trained in emergency and confined space situations.

As for compensation: The on call person receives \$10.00 extra per weekday and \$25.00 per day/evening on weekends and holidays, so \$100.00 extra just for being on call for the week. If called out while on call they receive their regular hourly pay or overtime rate depending on how many hours they have at that point, as for weekends the on call person is responsible for daily station checks which normally takes 2 to 3 hours but we pay out 4 hours Saturday and 4 hours Sunday and then they get the upcoming Friday off for having to work the weekend and to limit overtime, most of the time staff has no or very little overtime at the end of their on call period. A majority of our after hour call outs are for gas leak investigations in homes or businesses which we don't charge for, however if it is a water or sewer call out and there are no problems with our main lines we do charge the customer an hourly rate (which is decided by the council when the rate schedule is approved for the year) but we get very few calls that are water and sewer related, but when we do, we suggest to the customer to call a plumber for private service line issues due to the liability to the city if we get involved.

Holiday compensation is the extra \$25.00 for being on call and pay for 4 hours to do daily station checks, with staff getting 8 hours of holiday pay and time off we give the on call person the option to tack on all 8 hours of holiday pay to the 4 hours we pay out for the day or they can bank 4 hours of the holiday pay and use it as a floating holiday or if the on call person opts to work a full 8 hour day they can then bank 8 hours as floater. All pay during a week with a holiday is at regular rate unless they actually work more than 40 hours for which they will then get overtime pay.

As for winter and snow events that is a whole other monster, we still have only one on call, if it snows on the weekend we will call our entire crew in to assist. To limit overtime we take turn taking days off during the week to be able to stay at or just over 40 hours a week, I also have hired a part time heavy equipment operator to fill in when someone is getting close to overtime, this all works well on paper but we can't control mother nature and most of our overtime for the year is accumulated during the winter season, but we have found it is still cheaper for us to remove snow and pay out overtime than to hire a contractor.

There are a lot of moving targets and many variables to our on call schedule but it works really well, it saves on paying overtime and staff is happy with the flexibility and compensation, I would be happy to discuss this further if needed or if you have any questions regarding this information. I have attached the October on call schedule as well for an example of what we do year round.

Have a great day,

Subd 12. Public Works Employees On-Call Policy

The City of Battle Lake recognizes that Public Works Department employees must be available in case of emergencies during non-business hours, weekends and holidays. A rotating on-call schedule of Public Works employees shall be established to respond during such times.

On-Call duties will be rotated among Public Works Department employees on a 7-day schedule beginning and ending on Thursday at 8:00 am. The on-call employee shall respond as quickly as possible to all calls with a maximum response time of no more than 30 minutes to report to the City Shop. On-call employees will be compensated for 128 hours per week at \$2 per hour. (On call hours include for each weekday-4:30 pm to 8am, including a 12-12:30 lunch period and Saturday/Sunday-24 hours each).

Public Works Employees shall be paid one and one-half times their usual hourly wage for any time they are called out for an emergency, for a minimum of one (1) hour. If an employee is called out for more than one (1) hour, the employee shall receive one and one-half times their normal rate of pay for the actual time worked.

In addition, all Public Works employees shall be given a monthly cell phone stipend for use of personal cell phones to be contacted in emergencies. The employee's cell phone number must be approved for release to the public for work purposes. (see Section 27, Subd. 1)

Subd. 13. Police Department uniform allowance.

- Full-time Police Officers will initially be furnished with the following: 2 long sleeved

**Fund 406 *Seal Coating*
Balance Information**

2018 Balance: 50,294.47

Total On Call Hours (Split between W & S)

Each Employee	Hrs Per Week	Rate	Total Weekly	Total Annually	PERA	SS	Medi	TOTAL	TOTAL x 2
	128	\$ 3.30	\$ 422.40	\$ 21,964.80	\$ 1,647.36	\$ 1,361.82	\$ 318.49	\$ 25,292.47	\$ 50,584.94
Ralph Cox	YTD 2018								
		\$	9,462.65						

Proposed Increase in Hours and Pay-Will eliminate one on call person

Hrs Per Year	Rate	Total Annually	SS	Medi	TOTAL
1400	16.5	\$ 23,100.00	\$ 1,433.00	\$ 335.00	\$ 24,868.00

